



# ALiSEA National General Assembly In Cambodia 2025

## ALiSEA Governance

### IMPLEMENTERS



### SUPPORTERS



### DONORS



# ALiSEA Network

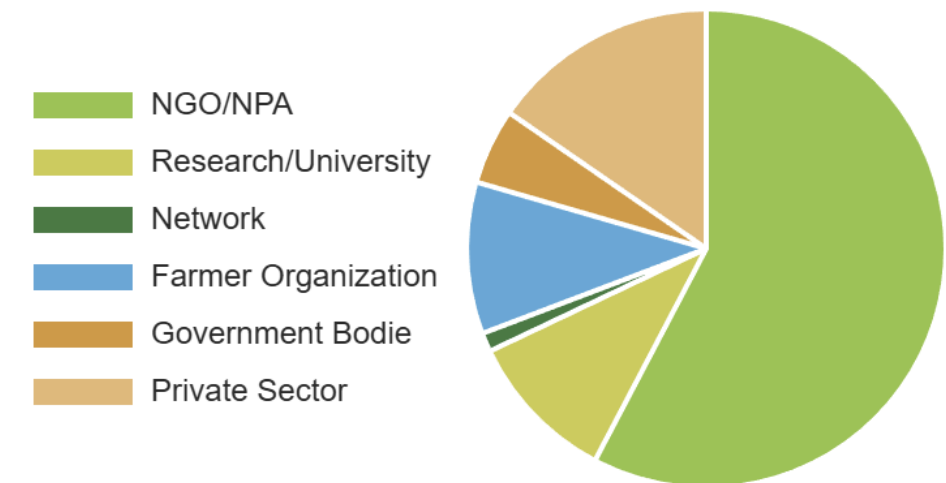


An Open coalition of multi-stakeholders promoting a broad understanding of Agroecology  
(over 200 members in the 5 countries, Cambodia, Vietnam, Laos, Myanmar and Thailand)

## Objectives:

- Answer need for knowledge exchange and experiences sharing
- Foster interactions and create safe space for stakeholders
- Increase visibility of agroecology of local initiatives

77 Membres in Cambodia



# ALiSEA Structuration



# ALiSEA Structuration

**Our Goal:** The ALiSEA network is strengthened and recognized at regional level.

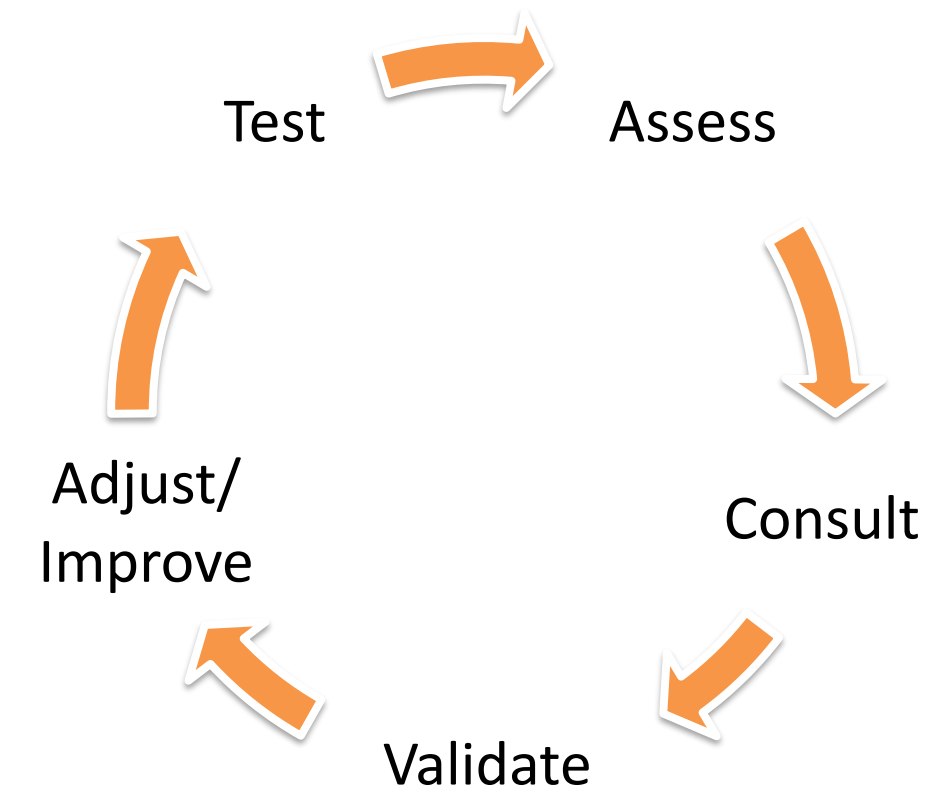
- GRET coordination and management towards member-owned network
- ALiSEA is currently an informal network

**Our Work/Approach :**

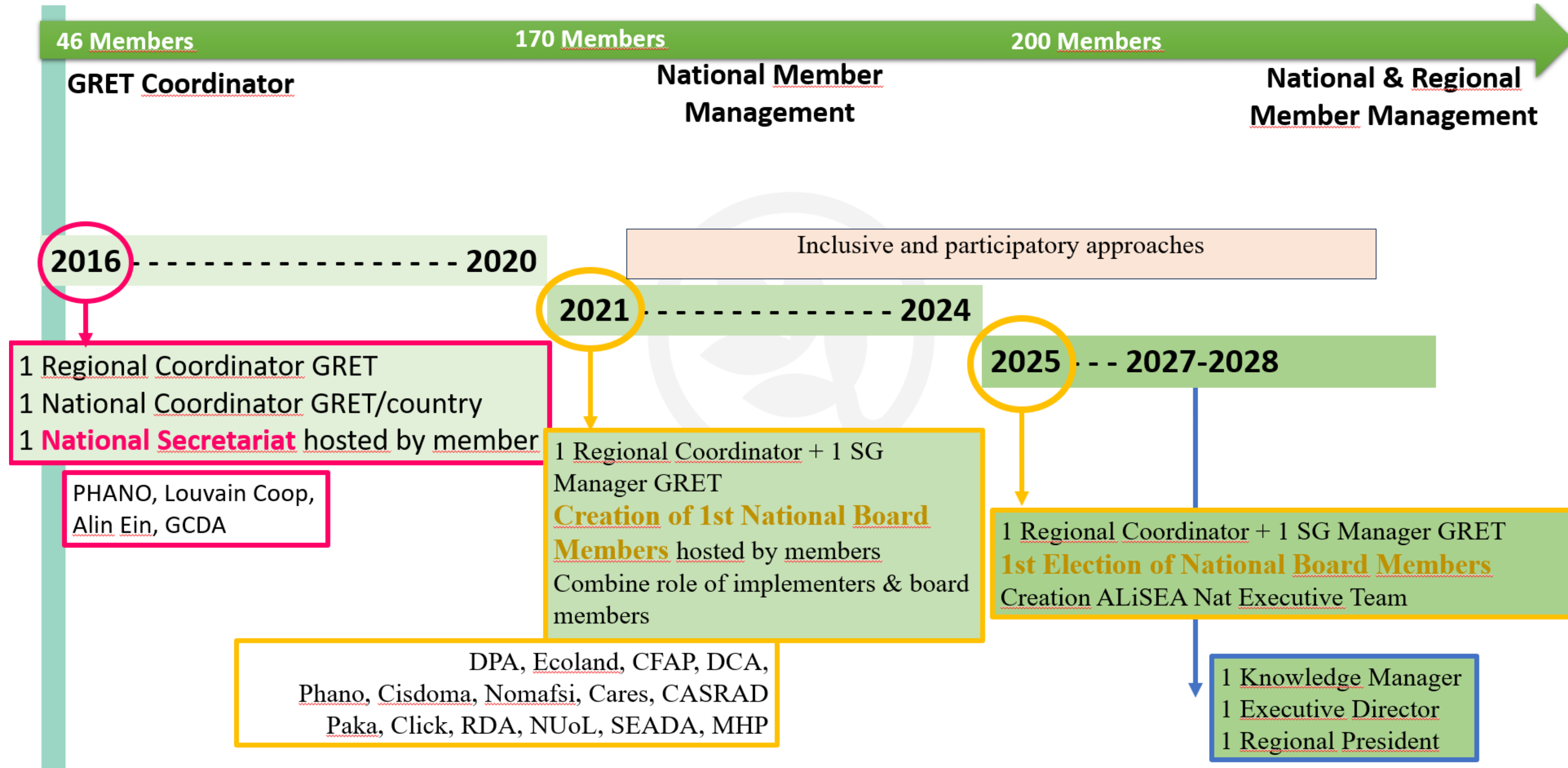
- Members involved in the strategy design and implementation
- Members consultations (General Assembly, survey)
- Adaptive management and learning loop

**Technical and financial support:**

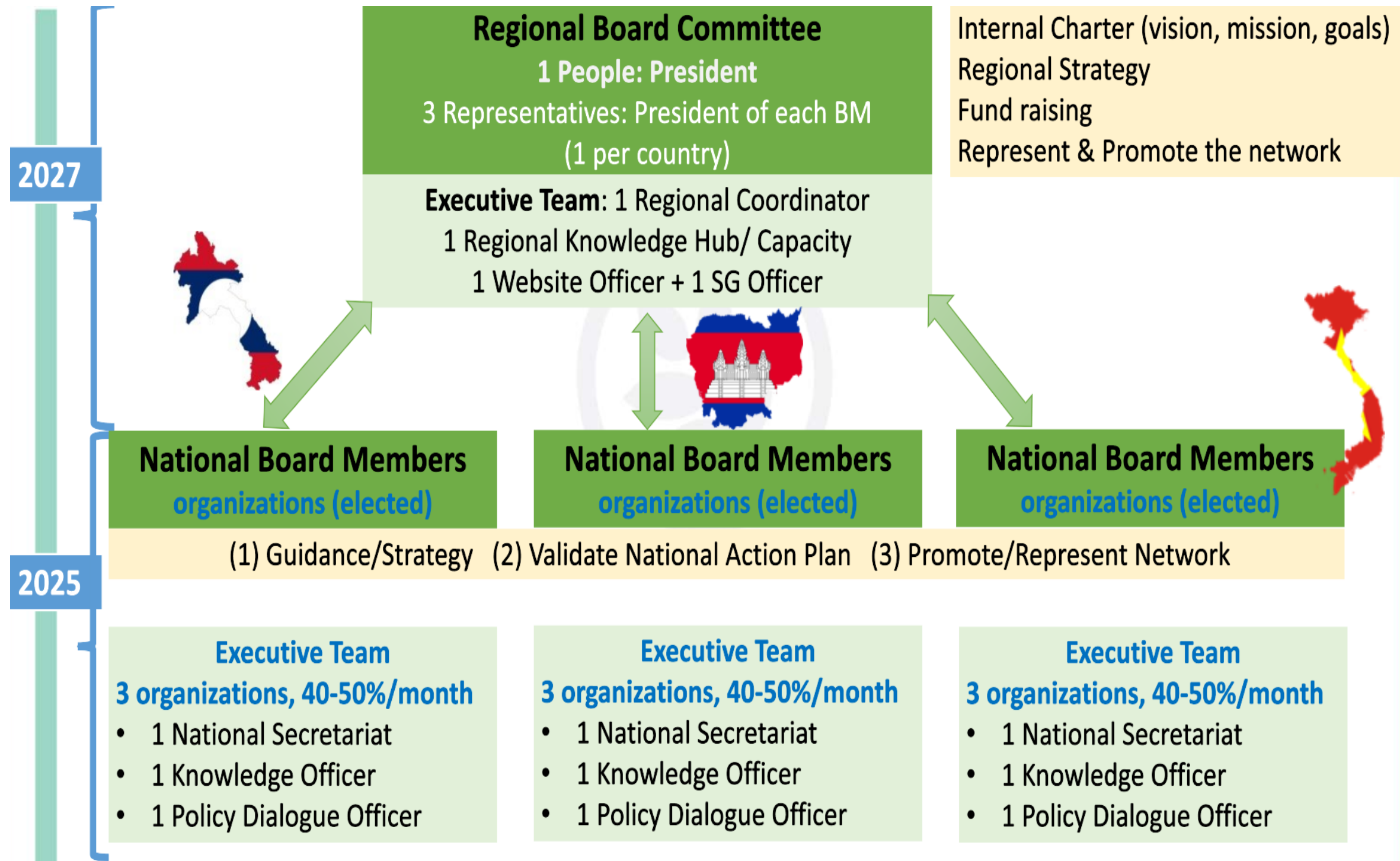
- ASSET Project, AFD/EU/FFEM
- APP project, SDC
- PArtNER project in Cambodia, Uni4Coop, Belgium Cooperation



# ALiSEA Structuration Evolution



# ALiSEA Current Structuration



- National Board Members**
- NGO
  - Farmer Organization Representative
  - Academia/Research center and Government agency
  - Private sector
  - Director of the organization histing the national secretariat

# First Nat-BoM Election & Ex-team Recruitment

## Board Members:

5 member organizations applied

55% of members election of National Board Members

(41/75 members)

- Re, FO : **BUAC**
- Re, Private sector : **Let Tap**
- Re, NGO : **ActionAid Cambodia**  
(Withdraw position)
- Hosting secretariate : **DPA** (Automatic board appointment)

## National executive team

2 Members organizations applied:

- National Policy Dialogue Coordinator : **CFAP**
- National KM Coordinator: **ECOLAND**
- National Secretarial: **DAP (continue position)**





# Welcome ALiSEA NATIONAL BOARD OF MEMBERS

*Mandate: 2025-2028*



**Mr. MAM Sambath**

*Hosting National  
Secretarait*

*Development and  
Partnership in Action  
(DPA)*



**Ms. YANN Sreyyat**

*Farmer Organization*

*Battambang Union  
of Agricultural  
Cooperatives (BUAC)*



**Ms. HIN Sinat**

*Private Sector*

*LetTap [Events and Tours](#)*



**Looking for Candidate**

*NGOs & INGOs*

*ALiSEA Member  
Organization*



**Looking for Candidate**

*Research/Academic*

*ALiSEA Member  
Organization*





# Welcome ALiSEA NATIONAL EXECUTIVE TEAM



**Ms. SOK Chanraksmeay**

*National Secretary*

*Development and Partnership in  
Action (DPA)*

*sok.chanraksmeay@dpacam.org*



**Mr. HOU Sorith**

*Knowledge Management  
Coordinator*

*ECOLAND*

*hsorith@rua.edu.kh*



**Mr. SOK Sotha**

*Policy Coordinator*

*CFAP*

*soksotha.cam@gmail.com*



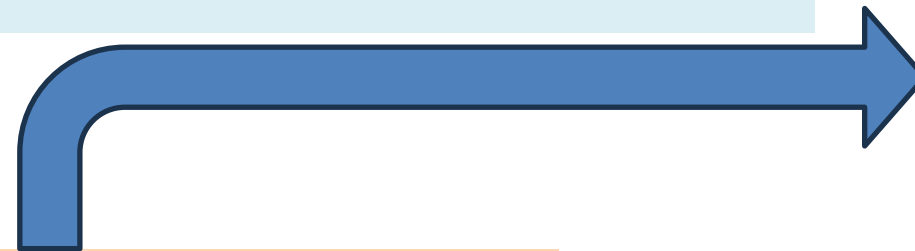
# ALiSEA Membership



# ALiSEA Membership process

- Membership process was reviewed and validated at the regional general assembly
- Members were informed and consulted at each national general assembly

Membership process updated  
**Transforming decisions made in small committee into inclusive decisions**  
Strengthening membership process



1. Previous membership process
2. Individual meeting between potential member and national secretariat
3. Application Form sent by email
4. Validation by Gret and National Secretariat
5. Upload Member Profile on ALiSEA website and promote on FB page

1. **ALiSEA BM promoting the network**
2. **Collective Orientation Meeting** with several organizations (based on BM suggestion)
  - AE Knowledge Products Sharing
  - Access to AE & ALiSEA welcoming package
  - AE basic Training for new members
3. Prepare a **Motivation Letter** to describe their work and interest
4. **Discussion and validation among all national Ex-team, Gret**
5. Online Registration Form and **Signed ALiSEA Internal Charter**
6. National Secretariat officially announce by email, on FB page, at National GA
7. Upload Member Profile on ALiSEA website and promote on FB page
8. Provide **Membership Certificate**





Welcome



# NEW MEMEBRS of ALiSEA Cambodia in 2025



Help the Old Age and Most Vulnerable Organization (HOM)



Mlup Prum Vihearthor Center (MPC)



Phnom Srei Organization for Development (PSOD)



Star Kampuchea (SK)



Organization to Develop Our Villages (ODOV)



**PLANETE URGENCE**  
GroupesOS  
Planete Urgence organization

# Membership follow-up

Aim to build good communication with all members and understand members' situations;  
24 less active members are contacted,

5 Member organizations are removed from membership

Reasons:

- Society for Community Development in Cambodia (SOFDEC)
- Life Improvement and Future Light Youth Organization (FLIFLY)
- Association Sustainable Agriculture Communities (ASAC)
- CEDAC
- Department of Agriculture, APSARA Authority

Inactive in the network:

- Never participated any events
- Failed communication via phone call and email



# Challenges

While number of members is increasing, how to maintain members active? How to meet the need?

- National **secretariat key to link** members & Board
- Large size network, can't keep track of everything, should **create sub-groups active & autonomous,**

How to keep a vibrant network?

- Keep **clear added-value** : diversity, agility and co-production
- Define **crucial decisions** be taken with all members & **practical decisions** only with core group members

How to ensure strong and sustainable network?

- Involvement of **core members group “drivers”** to run and manage it
- **Transparent** and fair benefit distribution among members
- **Financial Plan** at brainstorming stage (free-based contribution, symbolic membership fee, joint proposal)
- Need to secure additional co-funding

# Next steps / Perspectives

## Structure & Sustainability

- National secretariats will implement direct activities and manage budget,
- Structure at regional level needs to be further developed and tested
- Registration VS Informal network = results of the study on existing networks and identification of several scenarios

## Membership

- Strong asset = diversity of member's experiences and expertise within the network
- How to better benefit from mutual learning and improve quality of services?
- Strengthen members contribution, inclusive and participatory management, driving the network

## Strategy

- New funding opportunity thanks to SDC collaboration on Agroecology Promotion Program, and continues support by Uni4coop
- New modality of action on Youth Support on Agroecology





# Thank You



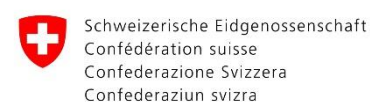
@បណ្តាញកសិអេកូឡូស៊ីនៅកម្ពុជា



[www.ali-sea.org](http://www.ali-sea.org)

Person in Contact: Ms. SOK Chanraksmeay  
[sok.chanraksmeay@dpacam.org](mailto:sok.chanraksmeay@dpacam.org)

## DONORS



## IMPLEMENTERS



## SUPPORTER

