



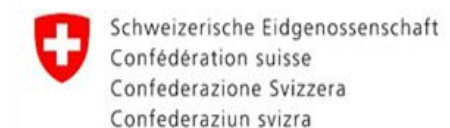
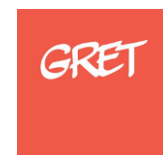
ALiSEA POLICY WORKSHOP IN VIETNAM

ASEAN GUIDELINES ON POLICIES FOR AGROECOLOGICAL TRANSITION

Nguyen Mai Huong (RUDEC/ISPAE)

Hanoi 12 November 2025

Organisers



Rationale for Agroecology Transitions in ASEAN



ASEAN Regional Guidelines for Sustainable Agriculture

The ASEAN Regional Guidelines for Sustainable Agriculture underscore the need to produce safe, nutritious food while protecting the environment and ensuring economic fairness, alongside the health and safety of farming communities.

Addressing the Challenges of Conventional Intensification

While conventional intensification has boosted productivity, it has also harmed the environment, climate resilience, livelihoods, and the socio-cultural fabric of agrifood systems.

Realizing Regional Goals

Transitioning to agroecology can help ASEAN realize regional goals, such as the Vision and Strategic Plan for ASEAN Cooperation in Food, Agriculture, and Forestry (2016–2025), the ASEAN Economic Community Blueprint 2025, the ASEAN Socio-Cultural Community Blueprint 2025, and the ASEAN Master Development (2022–2026).



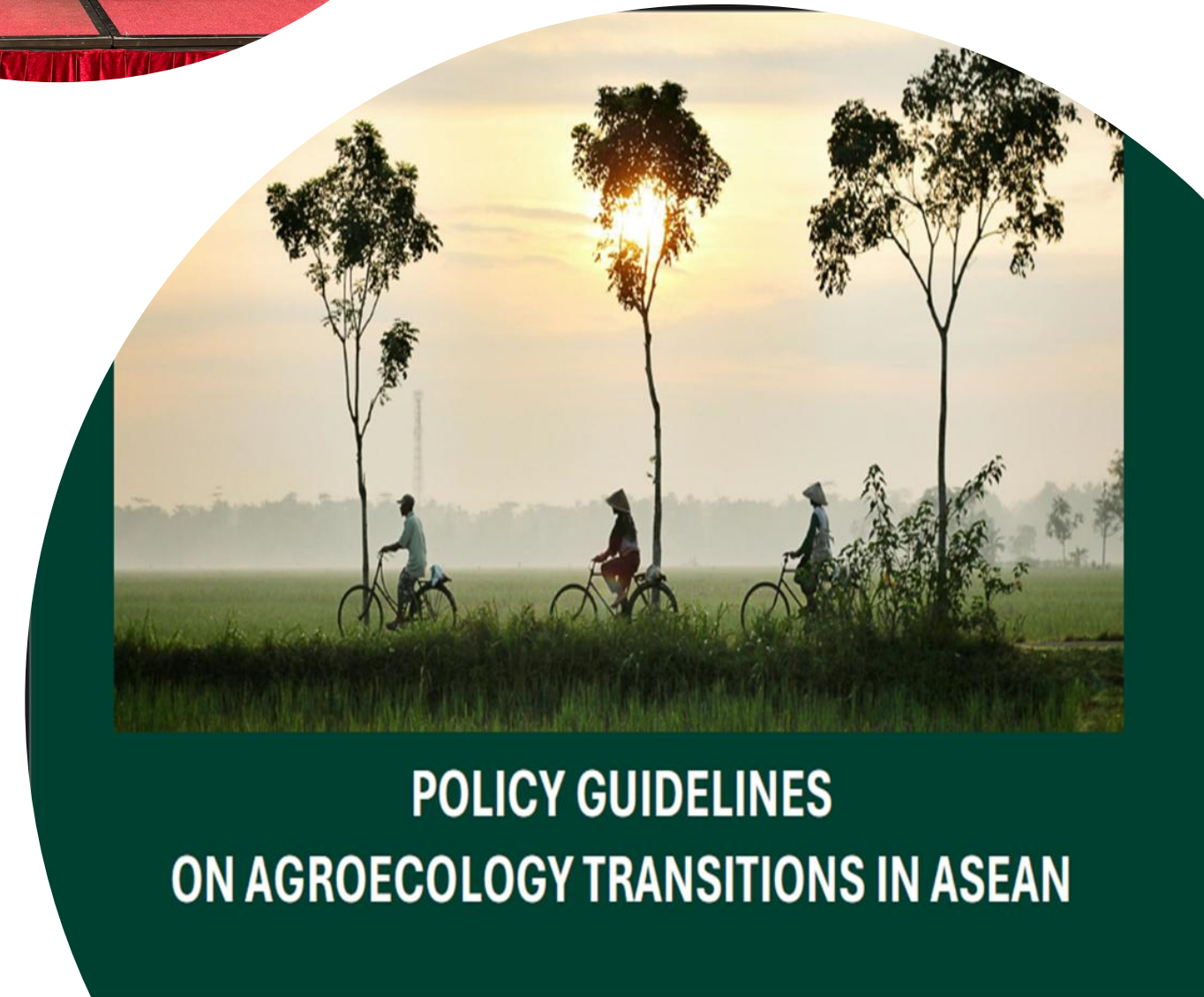
Why common guidelines are needed for ASEAN?

- ASEAN countries are at **different stages** in their journey of NNST Transformation
- Lack of common policy framework, lack of coordination between sectors
- Need for a **regional framework document** to help countries develop appropriate strategies and policies
- Guidelines developed as “**soft policy tool**” – orientation, not binding



Development process in brief

- **2012:** creation of Lao Facilitated Initiative on Agroecology (LICA); 2015: officially endorsed by ASEAN
 - Extended scope: conservation agriculture to agroecology
- **From 2021 – 2024:** supported by ASSET project
 - Led by Policy component of the project: CIRAD, ESCAP, FAO
 - (Re)engagement with the ASEC via ESCAP in 2021
 - A regional level multistakeholder dialogue process in support of LICA and the ASEAN sustainable agriculture strategy
 - Fed by experiences and learnings from the field
- **2024:**
 - Finalization: July 2024
 - Adopted at the 45th Special SOM-AMAF (6-8th August 2024)
 - Fully notified at 46th AMAF Meeting (Myanmar, 24 October 2024, virtually)



Objectives

- Practical guidance on transitions (not on technical practice per se)
- Guidance that supports key policy actors at national level
- Guidance which helps advance AE transition objectives in the work of key ASEAN bodies

Target users of the guidelines



Champions

those who advocate from within Government



Coordinators

who work with others to bring different stakeholders and processes together



Technical experts

who work with “Champions” and “Coordinators”, either within government, or through development partners’ interventions



Advocates

who are on the outside of government advocating for change

Table of content

A. INTRODUCTION TO THE GUIDELINES

B. AGROECOLOGY DEFINITIONS AND SCOPE

B1. Agroecology elements and principles

B2. Agroecology transitions

C. AGROECOLOGY TRANSITION GUIDELINES

C1. Planning for agroecology transitions

C2. Working with farmers

C3. Promoting transitions across agrifood value chains

C4. Capacity building and knowledge sharing

C5. Multi-stakeholder engagement

C6. Developing a research agenda for agroecology transitions

C7. Financing agroecology transitions

D. IMPLEMENTATION: STRENGTHENING ASEAN AND NATIONAL POLICY PROCESSES

ANNEXES

1. Theory of Change
2. M&E for AET
3. Institutional resources for AET
4. Agroecology Q&A
5. Contribution of AE agroecology to the SDGs
6. Agroecology examples and evidences from ASEAN countries
7. The role of LICA in AET
8. Multi-level governance and policy coherence for AET
9. Participatory land use planning
10. Some areas for prioritizing AET
11. Farmers' rights as stated in the International Treaty on Plant Genetic Resources
12. Community-supported agriculture (CSA)
13. Participatory Guarantee Systems (PGS)
14. Farmer Field School (FFS)
15. Sustainability finance models with he potentials to support AET

REFERENCES

7 Leverage points for agroecology transitions

A practical guide to addressing key barriers and accelerating the transition to agroecology
= Transformation lever points



D1. Planning for agroecology transitions



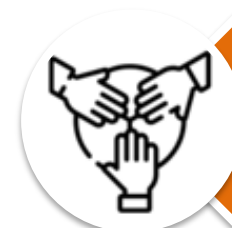
D2. Working with farmers



D3. Promoting transitions across the agrifood value chains



D4. Capacity building and knowledge sharing



D5. Multistakeholder engagement



D6. Developing a research Agenda



D7. Financing agroecology transitions

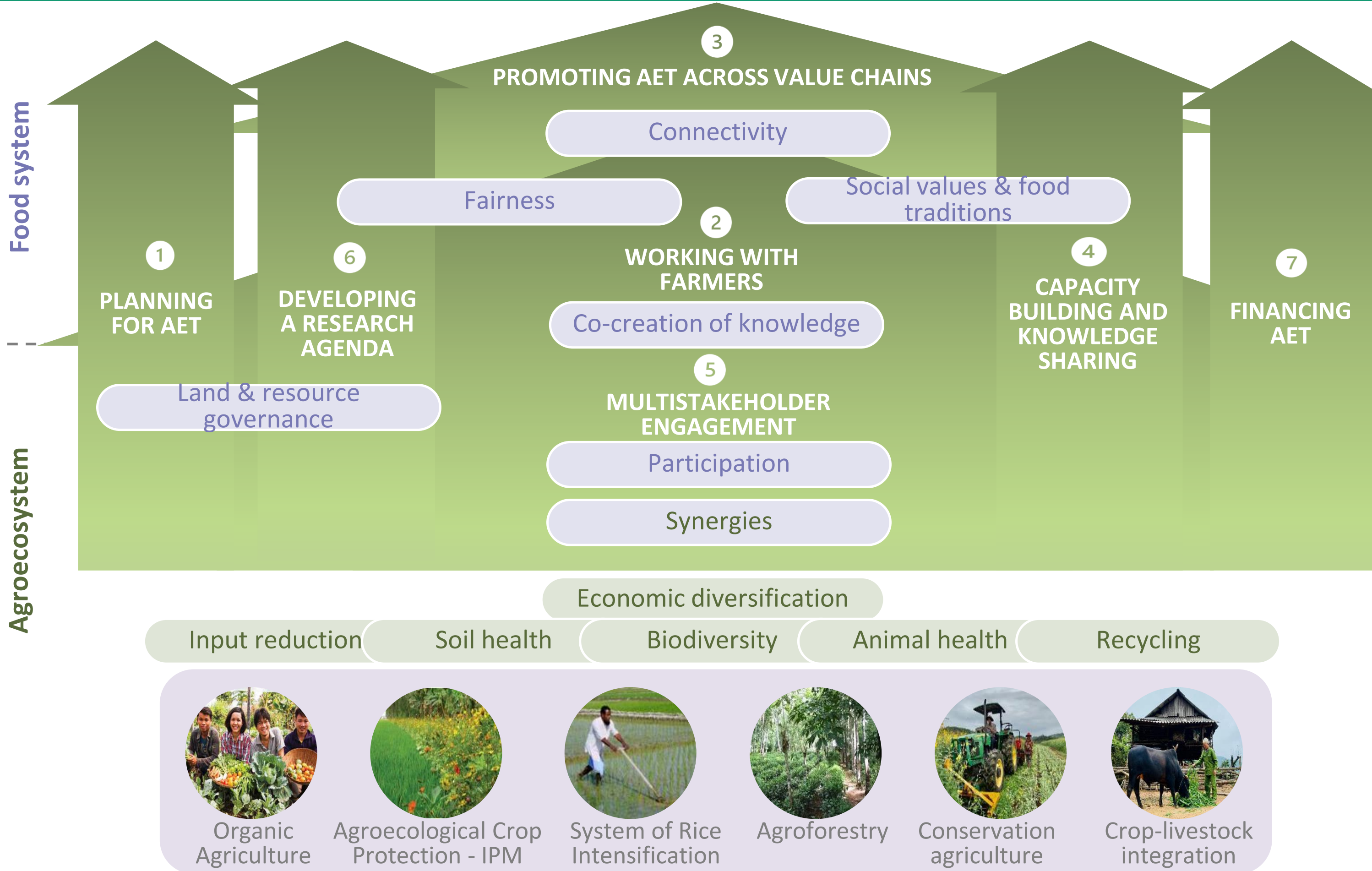
A toolkit including 7 areas of action (levers) to support policy changes & integration

Working through various levers

to act on the AE 13 principles

& support agroecology transitions (AET)

for sustainable food systems transformations



Structure of the guidelines – a tool kit identifying strategic areas of actions declined into practical recommendations

Strategic orientations

How to?

(To achieve this, you may consider)

Learnings from experiences & models / approaches



Guideline 1: Planning for agroecology transitions

Guideline 1.1

Formulate coherent policy and better targets for agricultural planning through agroecology frameworks.

- Enhance collaboration across sectors and scales to govern agroecology transitions.

Guideline 1.2

Engage stakeholders in planning processes

- Build stakeholder ownership and mobilize resources by setting realistic, ambitious targets using methods like surveys, focus groups, and consultations.
- Foster long-term partnerships focused on agroecology, encouraging cross-country collaboration and knowledge sharing.

Guideline 1.3

Apply a landscape or territorial approach

- Promote coherent planning and intervention at landscape levels to achieve agroecological benefits.
- Ensure landscape diversity to maintain ecosystem services like pollination, erosion control and nutrient cycling.
- Use landscape management to balance land use demands, improve agroecosystems and support inclusive stakeholder engagement and local knowledge use (including participatory land use planning and integrated landscape assessment).
- Support participatory approaches to prioritize interventions, foster synergies and protect vulnerable areas.

Guideline 1.4

Engage private sector and strengthen planning rules for agribusiness

- Strengthen regulations on land concessions and agrifood investments to prevent environmental harm.
- Co-invest in infrastructure supporting sustainable agriculture, such as water management, renewable energy, and transport systems.
- Align corporate sustainability efforts with agroecological goals based on national and community needs.

Guideline 1.3

Apply a landscape or territorial approach

- Foster planning processes that ensure coherent intervention at different landscape levels, recognizing that this is an instrumental scale at which to achieve agroecological benefits.
- Ensure landscape diversity, which is essential to the maintenance of naturally occurring ecosystem services – such as pollination, erosion control, and nutrient recycling – thereby contributing to both productivity and sustainability.
- Harness the potential of landscape management approaches for balancing competing demands and integrating policies for multiple land uses, thereby supporting inclusive multistakeholder engagement (see [guideline 5](#)).

To achieve this, AMS may consider:

- Mapping the variety of landscape management and territorial approaches in support of agroecology transitions, and engaging stakeholders to develop these. Examples include participatory land-use planning, jurisdictional approaches, integrated landscape approach, watershed management planning, forest restoration planning, multisectoral territorial planning, and even urban food system planning.
- Defining the boundaries of the landscape or territory based on natural features, administrative boundaries, or specific ecological or sociopolitical criteria.
- Performing, where applicable, integrated landscape assessment, understanding the key features of the area (including land uses, biodiversity, ecosystems, and human communities), and identifying the main challenges (such as habitat fragmentation, biodiversity loss, water depletion, land degradation or socioeconomic inequalities); including zoning of production types (e.g. organic, sustainable commodity sourcing, perennial, grazing), forest and biodiversity hotspots (see landscape approaches developed among others by ADB, FAO or GIZ).
- Supporting participatory approaches to identify technical and organizational levers and pathways, and to prioritize interventions, including measures that help protect or regenerate vulnerable and degraded areas.

Case study:

[Participatory Land Use Planning and Participatory Agricultural Land Management \(PLUP/PALM\) in Lao PDR](#)

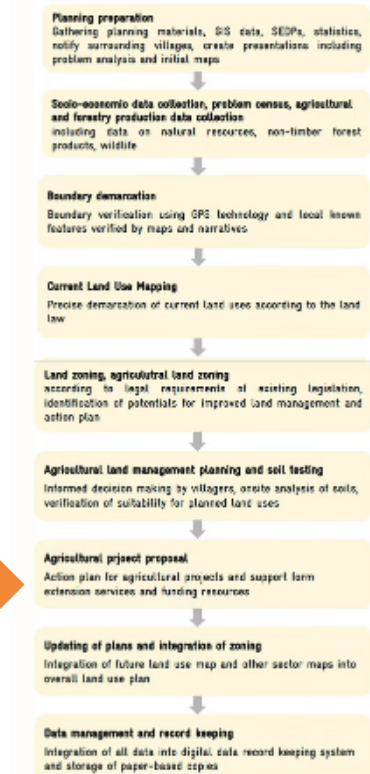
To go further:

- [Landscapes Futures - What are landscape approaches](#)
- FAO. 2017. Landscapes for Life: approaches to landscape management for sustainable food and agriculture
- ADB. 2017. Sustainable Land Management in Asia: Introducing the Landscape Approach
- GIZ. 2023. Agroecology: Making Ecosystem-based Adaptation Work in Agricultural Landscapes
- FAO. Agroecology Coalition. 2023. The interface between agroecology and territorial approaches for food systems transformation (Agroecology Dialogue Series, Brief No.1)

Participatory Land Use Planning and Participatory Agricultural Land Management in Lao PDR

Participatory Land Use Planning and Participatory Agricultural Land Management (PLUP/PALM) in Lao PDR

The process of steps of PLUP/PALM



The PLUP aims for detailed land classification and zoning at the village level, while the PALM provides specific plans for agricultural land, adding detail to the PLUP. In 2020, district authorities conducted PLUP/PALM for the first time in Nanom Village, Xone District in Lao PDR. Prior to this, no grazing land was designated. Through the Agriculture Future Land Use Management Zoning, 37 hectares were allocated as grassland for livestock. Forest conservation areas also increased from 113 to 327 hectares through Forest Land Use Management Zoning. By 2022, all 34 villages in Xone District had land use plans, leading to a District Land Use Plan.

Examples from Lao PDR, including this one, demonstrate several positive impacts of PLUP/PALM: reduced land conflicts, conservation of natural resources, improved land tenure security, sustainable land use, and increased rural income. Additionally, regulated land use has supported nationwide land registration and titling, boosting public revenue through taxes and fees and encouraging investment in rural development.

Success factors of PLUP/PALM for the realisation of positive impacts include:

Capacitate Government Authorities: Ensure authorities have sufficient financial resources, equipment, and training in participatory procedures and modern technology (e.g., GIS tools, UAV drones) for effective PLUP/PALM activities.

Integrate Competent Authorities: Involve various sectors in the planning process, provide spatial data for socio-economic development, and ensure provincial authorities support districts with technical assistance and continuous monitoring of land use plans.

Ensure Community Participation: Engage villagers in the planning process, inform them of their land rights, and involve them in decision-making, with special consideration for women and vulnerable groups. Strengthen local ownership for ongoing management and compliance with land use plans.

For example, the Targeted Awareness Raising (TAR) methodology has been developed to foster local participation. Specifically, the Lao Women's Union is actively involved to promote the active participation of women.

Link Plans to Follow-Up Actions: Connect land use plans to subsequent measures such as land registration, forest conservation, agricultural extension, and investment allocation to ensure sustainable impacts on income generation and environmental protection at the local level.

►Source: GIZ. 2023. [Participatory Land Use Planning in Lao PDR. How it contributes to Sustainable Rural Development](#).

1. Planning for agroecology transitions



•Guidelines

1. Formulate coherent policy and better targets for agricultural planning through AE
2. Engage stakeholders in planning processes
3. Apply a landscape or territorial approach
4. Engage private sector and strengthen planning rules for agribusiness (ex. Corporate sustainability programs and responsible sourcing investments)

Boxes on approaches and concrete experiences

- ✓ Some areas to prioritize agroecology investments
- ✓ Strengthening multilevel governance and policy coherence for agroecology transitions
- ✓ Participatory Land Use Planning and its use in Lao PDR (Eficas project)

2. Working with farmers



•Guidelines

1. Strengthen farmers', women and youth organizations and their active engagement in AE policy processes
2. Create enabling conditions to support farmers in transition: information systems, welfare and insurance schemes, crop and farm diversification
3. Promote a safe legal and institutional environment (*UN Declaration on the Rights of Peasants and Other People Working in Rural Areas, rights to seeds, land rights, data regulations*)
4. Harness the potential of digital technologies and data/knowledge management systems

Boxes on approaches and concrete experiences

- ✓ MASIPAG, Philippines
- ✓ SEARICE, Philippines
- ✓ Engaging Youths in Advocating Agroecology and Farmers' Rights
- ✓ Sustainable Agriculture Code of Arakan: Local Agroecology Policies
- ✓ International Treaty on Plant Genetic Resources for Food and Agriculture

3. Promoting transitions across agrifood VCs



Guidelines

1. Support domestic market development and short value chains for agroecological products
2. Create an enabling environment for domestic inclusive value chain transformations
3. Adapt public regulations on food safety, quality standards and certification to support AE product differentiation and consumer conscious choices
4. Consumer oriented policies: health, nutrition sensitive measures
5. Support local value chain development for inputs, equipment and machineries
6. Reform trade-related instruments, price support and sourcing policies

Boxes on approaches and concrete experiences

- ✓ Local public procurement (e.g. Cambodia – school feeding)
- ✓ Community supported agriculture (e.g. China)
- ✓ Open Food Network: community-controlled e-commerce platform
- ✓ MEDA: Facilitating Women's Access to Agricultural Value Chains – Myanmar
- ✓ Participatory Guarantee Systems (PGS) approach – Vietnam and Cambodia
- ✓ Malaysian Sustainable Palm Oil Certification Scheme

4. Capacity building and knowledge sharing



Guidelines

1. Build farmers and rural communities' capacity and facilitating farmers to farmers learning and exchange
2. Reshape extension and advisory services
3. Mainstream agroecology in vocational training, higher education and academic Curricula
4. Enhance public awareness on Agroecology

Boxes on approaches and concrete experiences

- ✓ Farmer field schools, Indonesia and Malaysia
- ✓ Bos Khnor - CARDEC, Cambodia (ASSET support)
- ✓ Green extension, Lao PDR
- ✓ ALiSEA (ASSET support)

5. Multistakeholder engagement



•Guidelines

1. Identify and co-develop clear objectives for engaging stakeholders
2. Conduct stakeholder mapping and develop understanding of their perspectives and interests
3. Institutionalize engagement
4. Move beyond consultation to support self-organization

Boxes on approaches and concrete experiences

- ✓ CASIC (ASSET support)
- ✓ ESCAP empowerment and inclusion framework
- ✓ Philippine Partnerships for Sustainable Agriculture (PPSA)

6. Developing a research agenda for agroecology transitions



•Guidelines

1. Reshape Research Orientations: farm to food system levels, multidimensional assessment, etc.
2. Foster innovative approaches of doing research and co-producing knowledge with a variety of actors
3. Address farm scale agroecology research agenda (*Incl. diversification, multitarget breeding, CLI, ACP, service crops*)
4. Address landscape level AE research agenda
5. Address food system scale AE research agenda at various levels (*Incl. FS assessment, territorial branding*) and strengthen science policy interface

Boxes on approaches and concrete experiences

- ✓ True cost accounting (TEEBAgriFood, Thailand)
- ✓ Foresight processes and participatory Theory of Change, **experience from ASSET project**
- ✓ Participatory action research on crop livestock integration, **ASSET, Vietnam**
- ✓ Low cost and low-tech mechanization to decrease drudgery, CSAM

7. Financing agroecology transitions



•Guidelines

1. Create an enabling environment to repurpose public funding and private investment towards the transition
2. Build a coherent national AE strategy to attract and accountable framework to direct international funding into the transition
3. Develop innovative financial models that address the needs of smallholder farmers for transitioning in various contexts, while leveraging global sustainability finance

Boxes on approaches and concrete experiences

- ✓ Dei Meas: Sustainability finance instrument in Cambodia (**ASSET support**)
- ✓ Sustainability finance models with potential to support agroecological transition

WHAT'S NEXT?



LICA
LAO FACILITATED INITIATIVE ON
AGROECOLOGY FOR ASEAN



- Support AMSs in building a **policy environment conducive** to agroecological transformation
- Enhance **multi-sectoral, multi-level** and **multi-stakeholder** coordination
- Promote **learning, experience sharing** and **regional cooperation**

- **Communication/ socialization:**
 - Dissemination to all ASEAN Member States and relevant organisations – mass media communication – translation in local languages
- **Enrichment of the dedicated website**
 - Library of emblematic case studies and experiences (to be sustained)
 - Link to relevant resources from other platforms incl. ALiSEA, FAO, AE TPP, AE coalition
- **Localization/ adaptation of the guidelines to national & local contexts:**
 - Tailoring of the guidelines to national contexts and strategies (e.g. Vietnam already engaging in this)

What can ALiSEA contribute?



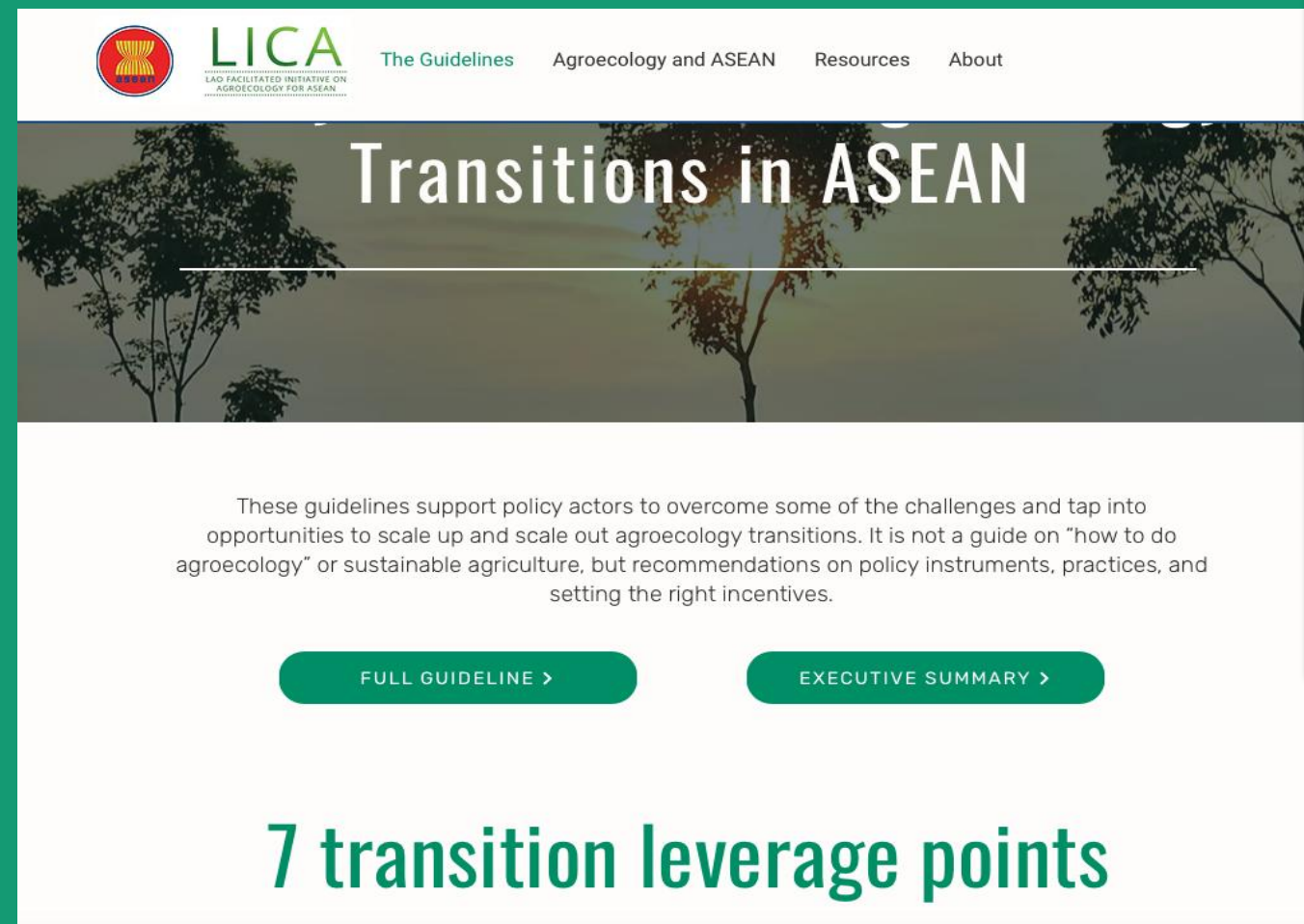
Role of ALiSEA in promoting AET


- ALiSEA is a **regional network of knowledge and action** for agroecology
- Can:
 - Disseminate and apply the Guidelines in member activities
 - Promote **research – practice – sharing lessons**

Starting with.....



- Share/disseminating result of **pilot models/learning sites**
- Organize regional workshops/seminars, connecting management agencies – researchers – businesses – farmers
- Working on M&E AET at model level
-



 **LICA** The Guidelines Agroecology and ASEAN Resources About
LAO FACILITATED INITIATIVE ON AGROECOLOGY FOR ASEAN

Transitions in ASEAN

These guidelines support policy actors to overcome some of the challenges and tap into opportunities to scale up and scale out agroecology transitions. It is not a guide on "how to do agroecology" or sustainable agriculture, but recommendations on policy instruments, practices, and setting the right incentives.

[FULL GUIDELINE >](#) [EXECUTIVE SUMMARY >](#)

7 transition leverage points





POLICY GUIDELINES ON AGROECOLOGY TRANSITIONS IN ASEAN

    Food and Agriculture Organization of the United Nations 

Adopted at the 45th special SOM - AMAF, 6-8 August 2024



“How can we – ALiSEA members – work together to translate this Guide into action and practices in Vietnam?”

Thank you!



@ALiSEA Vietnam




www.ali-sea.org



DONORS




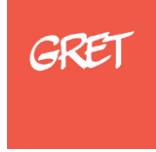
France    Co-funded by the European Union  FONDS FRANÇAIS POUR L'ENVIRONNEMENT MONDIAL





 Schweizerische Eidgenossenschaft
Confédération suisse
Confederazione Svizzera
Confederaziun svizra

SUPPORTER

 Agroecology and Safe Food System Transitions

IMPLEMENTERS

 PHANO Hội Khoa học Phát triển Nông thôn Việt Nam  RUDEC  SPERI NURTURING NATURE  GRET

 AGRIT&GE  HỢP TÁC XÃ ĐIỀU HỮU CƠ TRUECOOP **True.coop** CO-OPERATIVE OF ORGANIC CASHES  CARES  ADC Adaptation Diversity Commitment

How are the guidelines relevant at different levels?

