



ALiSEA

AGROECOLOGY LEARNING ALLIANCE
IN SOUTH EAST ASIA

ALiSEA Regional Exchange Visit and Coordination Meeting Knowledge Management

Dong Thap, 25th May 2026

DONORS





Agenda

**Section 1: ALiSEA KM strategy and roadmap
(2026-2028+)**

Section 2: Knowledge Hub operation



Section 1

ALiSEA KM strategy and roadmap (2026-2028+)

- **Presentation (15 min)**
- **Q & A (5 min)**
- **Group discussion (60 min)**
- **Plenary feedback (20 min)**
- **Synthesis (5 min)**



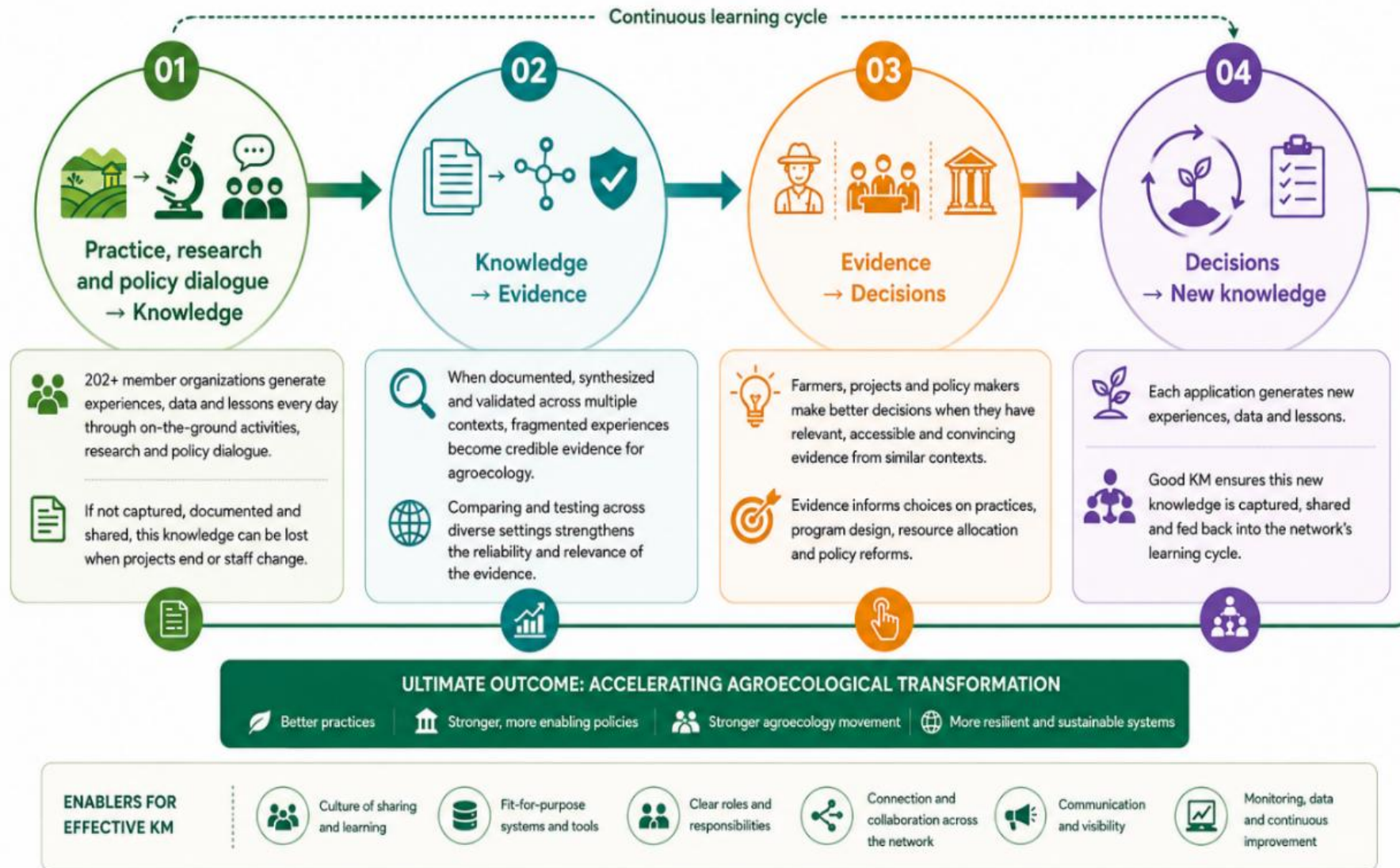
ALiSEA KM strategy (2026-2028+)



ALiSEA objective	KM contribution
1. Strengthen knowledge and experience sharing among initiatives and actors	Provides the main infrastructure for collecting, organizing, and sharing knowledge across the network.
1. Increase the visibility and credibility of the agroecology movement towards policy makers and consumers	Turn scattered field experience into structured and credible evidence that supports communication and policy engagement.
1. Scale up the development and adoption of agroecological practices among farmers.	Help lessons and practical experiences to circulate more widely, so that farmers and practitioners can adapt and apply them in different contexts.

THEORY OF CHANGE OF KNOWLEDGE MANAGEMENT (KM)

Good knowledge management creates a continuous knowledge flow from practice to lasting impact for agroecological transformation.



Two strategic functions of the KM system



1. Developing and organizing knowledge resources



1 Documenting field evidence, research, and policy contributions

KPs • Datablogs • Guides • Videos • Briefs



2 Member-contributed knowledge and resources

Research • Training materials • Case studies
Data & tools • Institutional documents



3 Curating external knowledge and learning resources

Resource monitoring • Knowledge curation
External partnerships



4 Synthesizing and cross-context learning

Comparative materials • Thematic synthesis
Priority themes



2. Knowledge circulation, learning, and engagement



1 Knowledge Hub (KH)

Central platform to organize, connect, and share knowledge

2 Learning spaces and knowledge circulation



Farmers

- Field schools
- Technical training
- Peer exchange



Researchers

- KH
- Conferences
- Technical discussions



Policy actors

- Policy dialogue
- Research-policy dialogue



Media & public

- Media bridge programs
- Communication campaigns



Knowledge creates value when it continues circulating, connecting actors, and supporting learning across contexts.

ALiSEA KM ROADMAP (2026–2028+)

Phased steps toward a connected, learning, and impactful KM system

01

2026



Phase 1

Stabilizing operations
and building knowledge flow

02

2027



Phase 2

Strengthening depth and
connectivity of knowledge

03

2028+



Phase 3

Expanding learning value
and knowledge use

Stabilizing operations and building knowledge flow

Establish a solid foundation for regular KM practices and a stable knowledge flow across the network.

FOCUS AREAS



Operationalize KM system

Set up guidelines, workflows, and coordination mechanisms between regional and national teams.



Maintain content flow for the KH

Ensure steady contributions from members and integrate external resources.



Strengthen capacity

Build the capacity of NKMCs and members to develop key ALiSEA knowledge products.



Integrate into network events

Embed documentation and knowledge sharing in webinars, workshops, trainings, and other events.



Develop initial learning materials

Create guidance and learning resources linked to priority themes of member interest.



KEY OBJECTIVE

Create an initial critical mass for the Knowledge Hub: enough content, diversity, and regularity for users to recognize value and return.



Strengthening depth and connectivity of knowledge

Shift focus toward the quality, relevance, and reuse of knowledge across the network.

FOCUS AREAS



Strengthen production

Strengthen the production of datablogs and agroecology guides around national and regional priority themes.



Develop thematic materials and cross-context learning

Develop selected thematic materials to help members compare experiences and lessons across different contexts.



Explore new engagement formats

Explore formats such as media bridge programs and research-policy dialogue to expand the use of knowledge beyond the network.



Strengthen partnerships and content exchange

Strengthen partnerships and content exchange with other regional networks, organizations, and knowledge platforms.



KEY OBJECTIVE

Provide a more connected understanding of agroecological experiences across different contexts in the region.



Expanding learning value and knowledge use

Increase the practical use of knowledge in learning, training, and decision-making across the network.

FOCUS AREAS



Develop open online courses

Develop open online courses on priority agroecology themes through the KH.



Develop learning resources

Develop learning resources for training and field schools.



Pilot thematic learning exchanges

Pilot thematic learning exchanges between members working on similar issues or contexts across countries.



Identify and promote thematic priorities

Identify and promote selected thematic priorities to encourage further documentation and synthesis of knowledge across the network.



KEY OBJECTIVE

Increase the practical use of knowledge in learning and training, and expand impact across the region.



Group discussion (60 minutes)

Objectives

- To collect inputs and feedback from participants to refine and finalize the KM Strategy.

Expected Outcomes

- Inputs collected
- Directions for revision agreed

Format

- Participants are divided into **2 groups, mixing roles and countries.**
- Plenary: Restitution and feedback from the other group

Group discussion

Phase 2027: Strengthening depth and connectivity of knowledge

- Strengthening the production of datablogs and agroecology guides around national and regional priority themes;
- Developing selected thematic materials based on existing knowledge resources that help members compare experiences and lessons across different contexts;
- Exploring new knowledge engagement formats such as media bridge programs and research-policy dialogue to expand the use of knowledge beyond the network.
- Strengthening partnerships and content exchange with other regional networks, organizations, and knowledge platforms;

Phase 2028 and beyond: Expanding learning value and knowledge use

- Developing open online courses on priority agroecology themes through the KH;
- Developing learning resources for training and field schools;
- Piloting thematic learning exchanges between members working on similar issues or contexts across countries;
- Identifying and promoting selected thematic priorities to encourage further documentation and synthesis of knowledge across the network

Method: Participants review the roadmap priorities, classify activities into four categories, and discuss the guiding questions.

Category	Meaning for roadmap	Guiding questions
Must have	Essential priorities for the KM system to function effectively	<ul style="list-style-type: none"> - Why is this essential at this stage? - What would happen if this activity is missing? - Is it realistic to implement regularly across countries?
Nice to have	Useful or valuable directions, but not essential or urgent for the KM system	<ul style="list-style-type: none"> - What additional value does this bring? - Could it remain optional, selective, or limited to some themes?
Too ambitious for this phase	Important or interesting directions, but currently difficult to implement realistically	<ul style="list-style-type: none"> - What makes this difficult at this stage? - Should it be simplified, piloted, postponed, or moved to another phase – which one?
Missing priorities	Important gaps or strategic needs that are not yet reflected	<ul style="list-style-type: none"> - What important priorities or activities are still missing? - Why are they important for the KM system? Which phase should they belong to?





Section 2

Knowledge Hub operation

- Framing of key challenges (10 min)
- Group discussion (60 min)
- Plenary restitution (15)
- Synthesis (5)



Knowledge Hub: Key figures



1,240

datasets currently uploaded
(including unpublished/internal uploads)



All insights products



34

briefs



44

leaflets



28

videos



Almost **70** ALiSEA knowledge products
beside ASSET partner products.



Regional coverage



Cambodia

276



Lao PDR

246



Myanmar

110



Vietnam

216





APP Project – Key Indicators



 PER YEAR

1



KPs from
members
contribution

200

datasets/country

2



KP from
external
platforms

50

KR/country

3



Datablogs

3

/country

4



ALiSEA
KPs

5

KP/year





Quality and reliability of knowledge



Too strict?

- ✗ Slow publication
- ✗ Difficult to sustain






Too open?

- ✗ Uneven content quality
- ✗ Reduced credibility



What approach should ALiSEA follow?

Different types of knowledge require different levels of review depending on



-  document type
-  intended use,
-  and level of evidence.



For example: -----





Stronger review for:

-  Policy and research brief
-  Synthesis material



More flexible approaches for:

-  Technical leaflet
-  Practical implementation knowledge video

Group discussion (60 minutes)

Objectives

- To identify practical challenges and solutions to strengthen content generation, KH feeding, and quality of the Knowledge Hub.

Expected Outcomes

- Practical solutions identified
- Priority actions defined

Format

- Participants are divided into 3 small groups, mixing roles and countries.
- Participants rotate between thematic tables “World café” format.
- Each table has: 1 facilitator, 1 note taker.

Key Discussion Questions



TABLE 1

KH Feeding

- What are the main barriers preventing members from actively contributing documents to the KH?
- What practical and feasible approaches could help maintain more regular and long-term member contributions?



TABLE 2

Knowledge products development

- How can ALiSEA better encourage and support members to develop KPs using ALiSEA templates and branding?
- Should ALiSEA define some priority themes to encourage more targeted content development? Which prioritized themes?



TABLE 3

Content quality & expert review

- Should expert review processes remain flexible depending on content type? How?
- How can ALiSEA build and maintain a practical and sustainable expert review group?



ALiSEA

AGROECOLOGY LEARNING ALLIANCE
IN SOUTH EAST ASIA

Thank you!