

Situating agroecology in the agricultural development of Cambodia: a systemic view

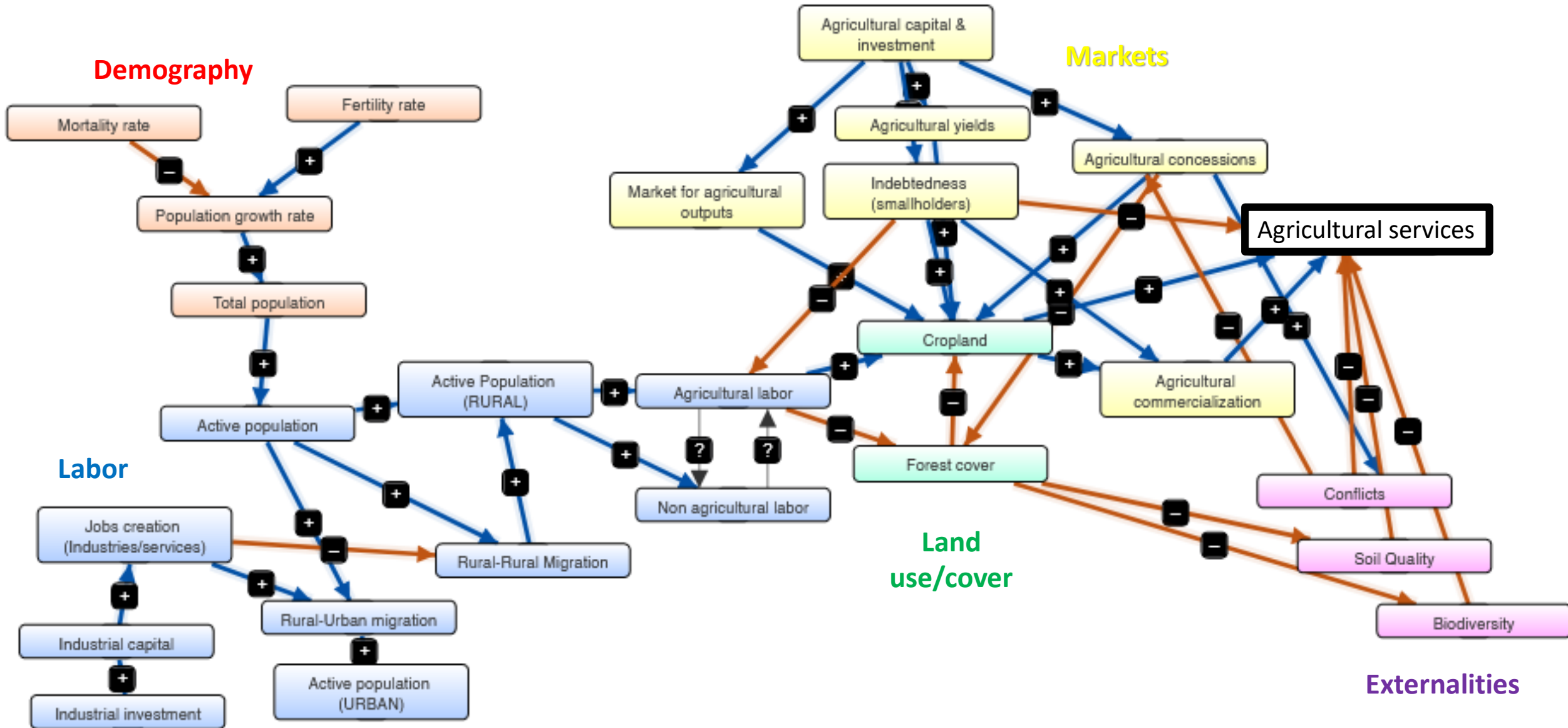
Jean-Christophe Diepart

Peasants and Territories

'National Foresight and Theory of Change on Agroecology and Safe Food System'

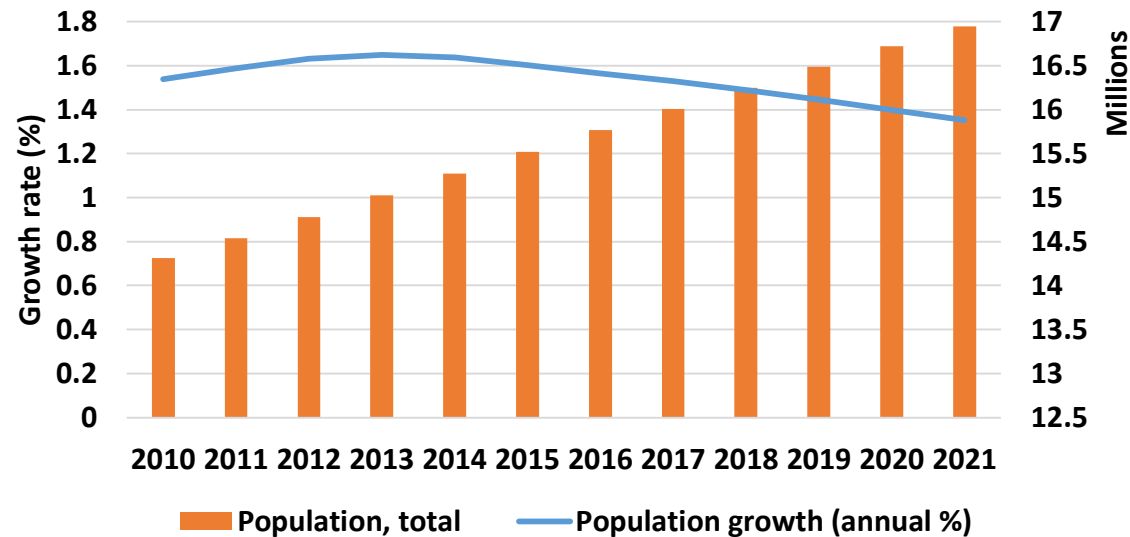
Consultation workshop, October 18th 2022

The limits to agricultural growth in Cambodia

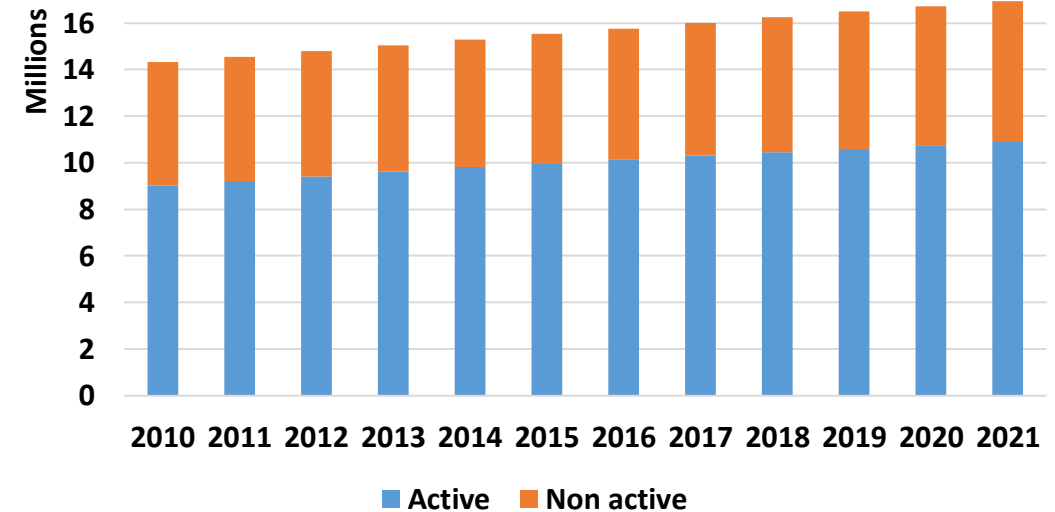


Demography

Growth rate and total population



Active vs non active population



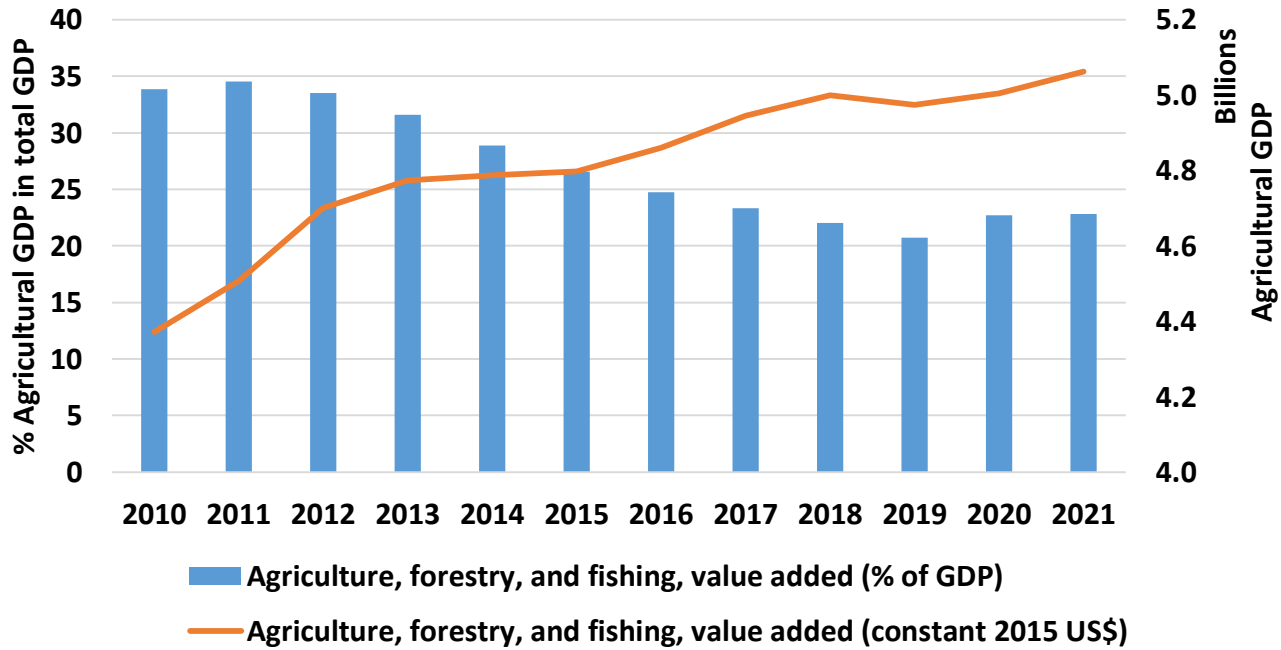
Sources: World Development Indicators, WB

- Demographic transition
- Demographic growth remains high

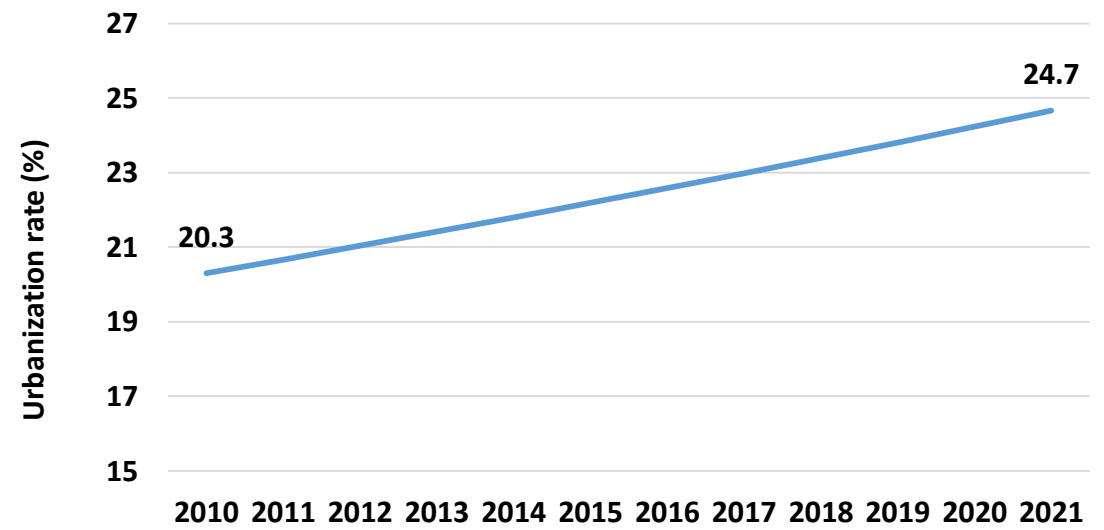
- Demographic dividend
- Challenge of job creation

Labor

Agriculture in GDP

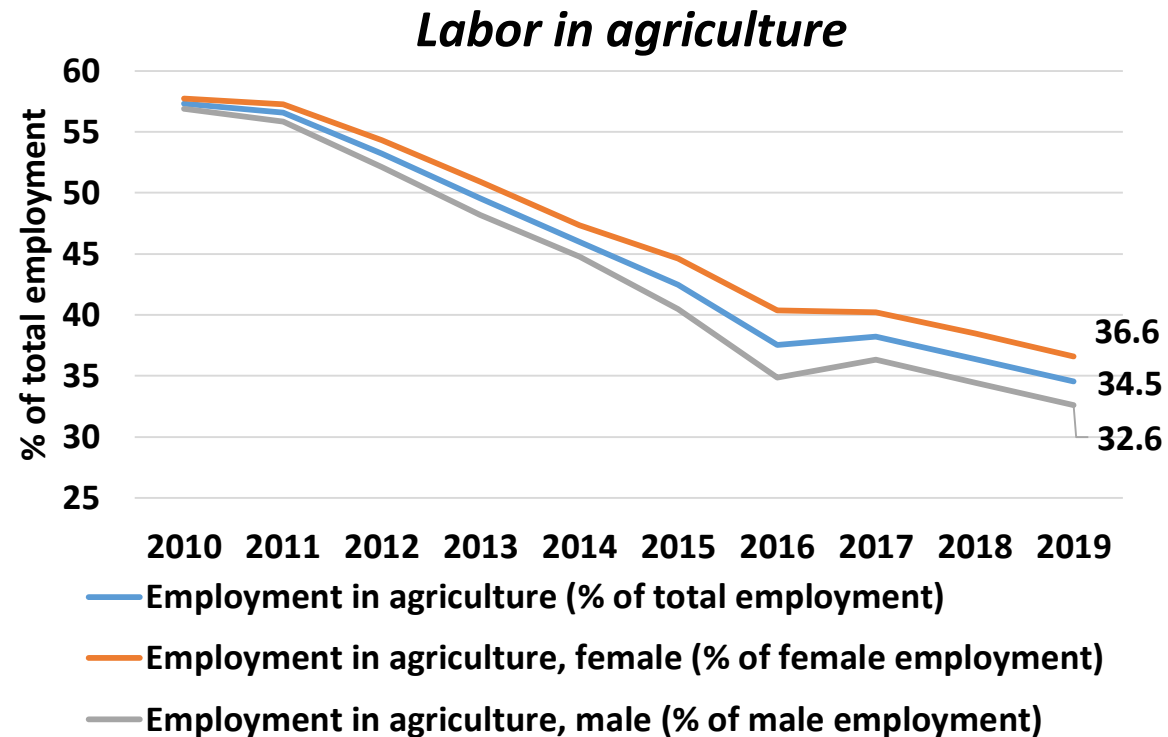


Urbanization



Sources: World Development Indicators, WB

Labor

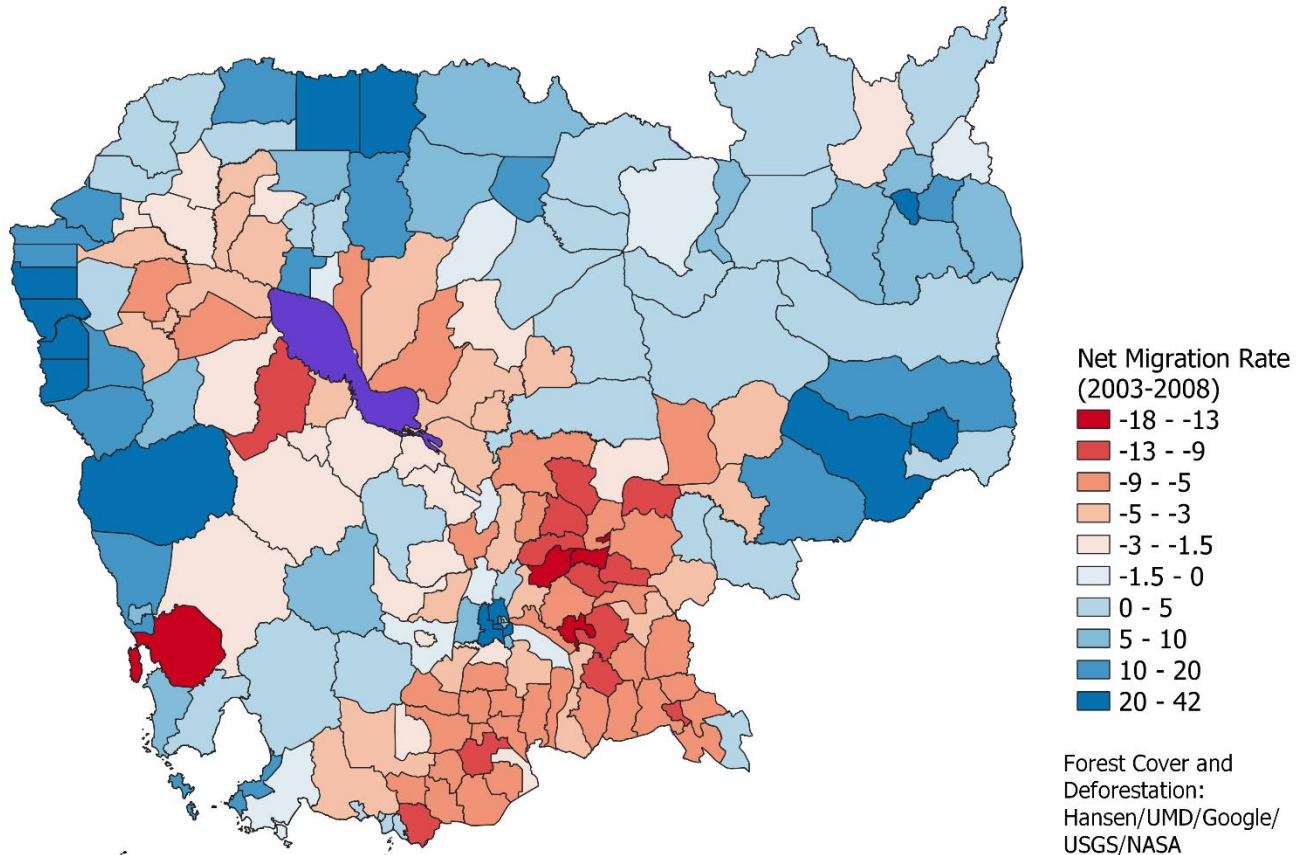


Sources: World Development Indicators, WB

- Labor diversification farm & non farm
- Job migration and translocal livelihoods
- Truncated agrarian transition: job creation in industries/services doesn't keep up with increase of active population in rural areas

Labor

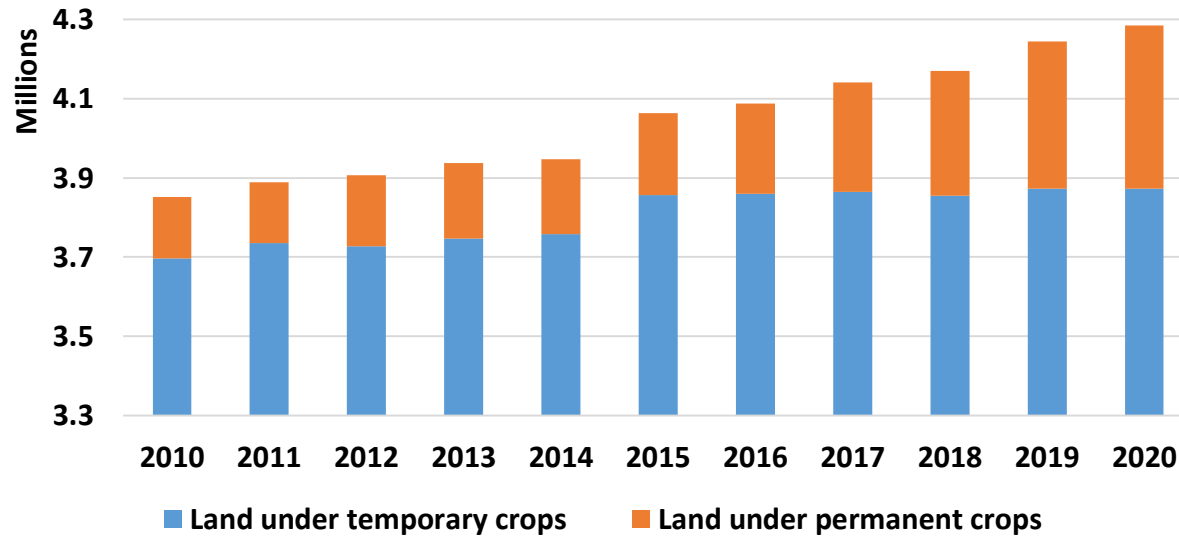
Net migration rate



Migration streams	2008	2019
Rural-to-Rural	50.9	29.0
Rural-to-Urban	27.5	34.0
Urban-to-Rural	6.5	7.0
Urban-to-Urban	15.1	30.0

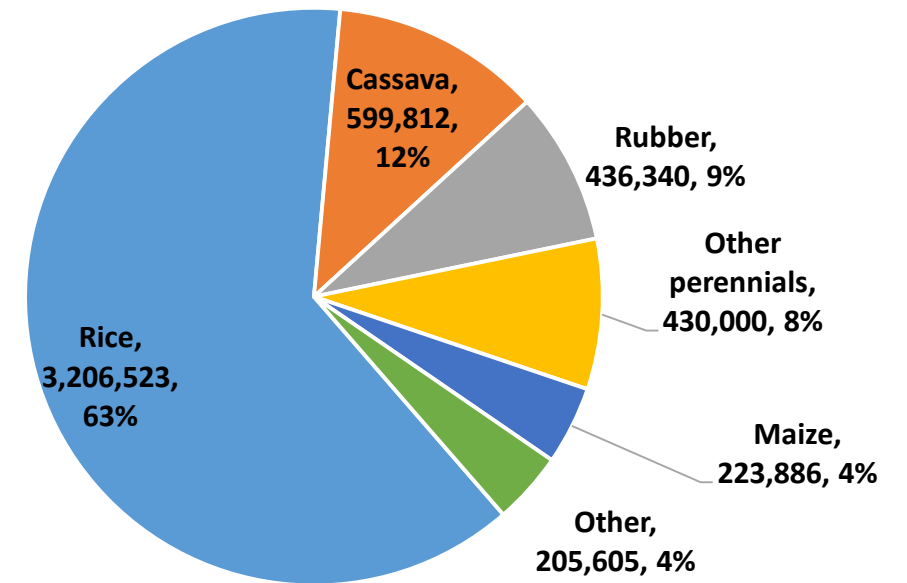
Land use - land cover

Cropland area



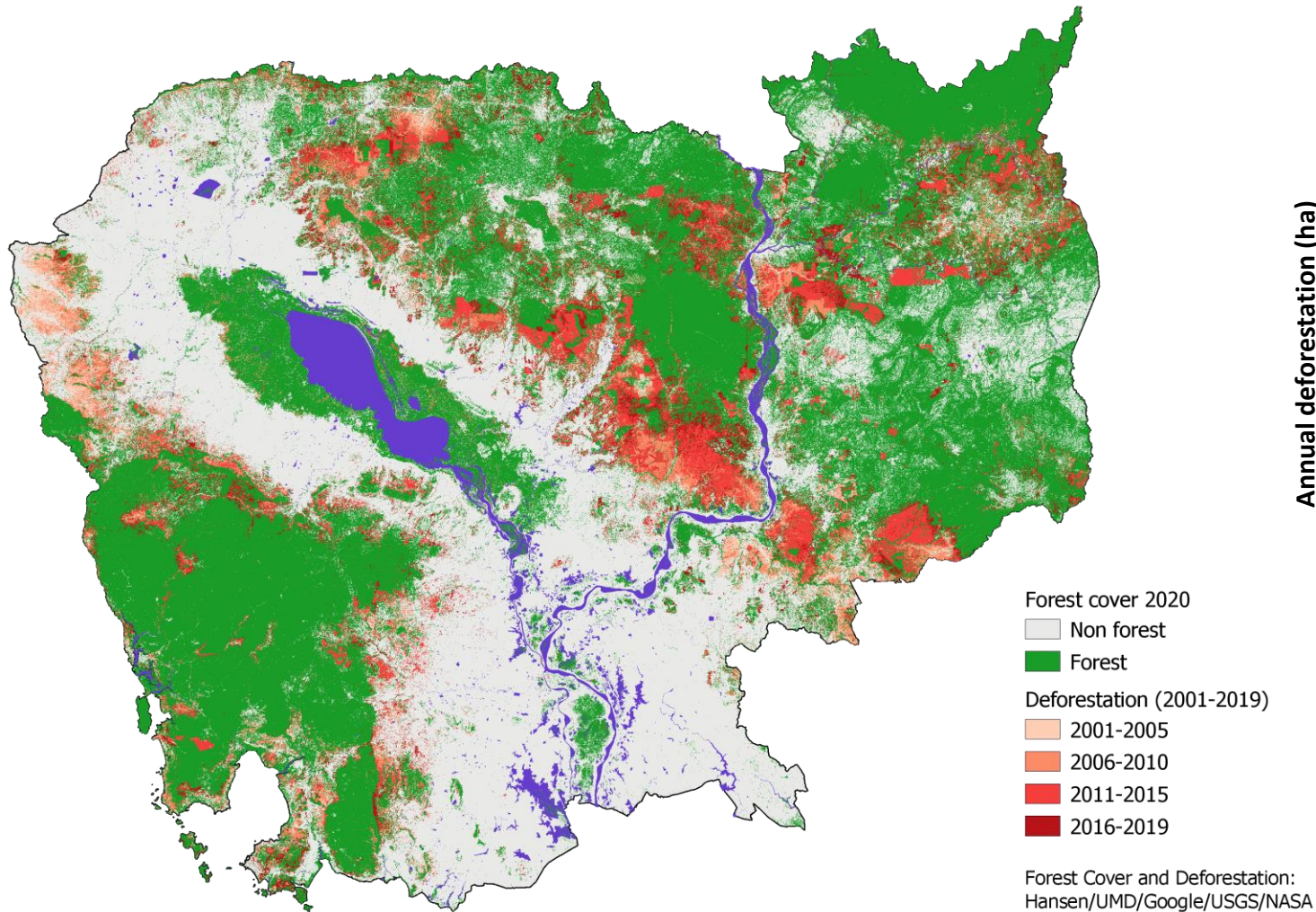
Sources: FAO stat

Cultivated area

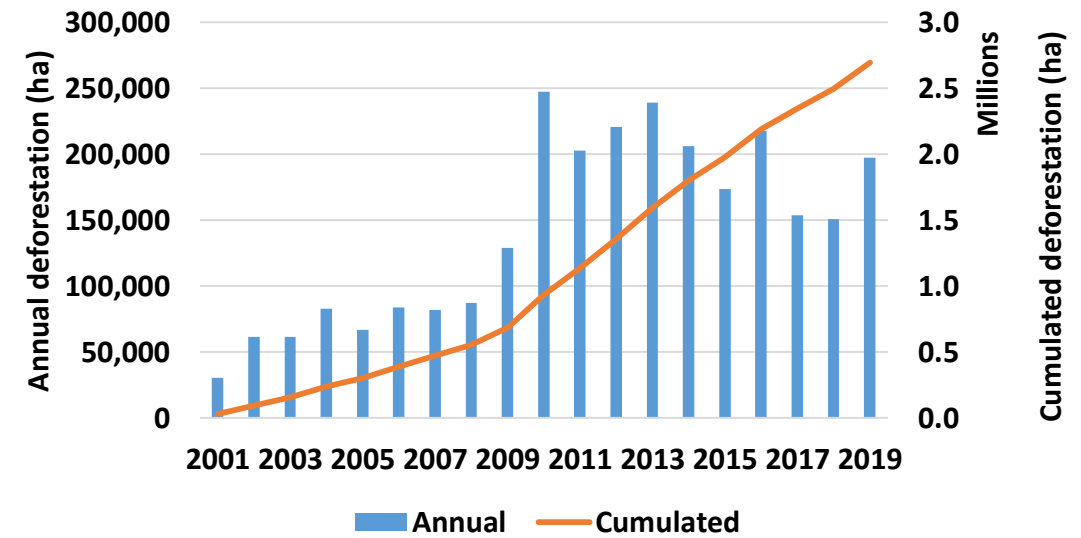


Sources: MAFF 2018

Land use - land cover

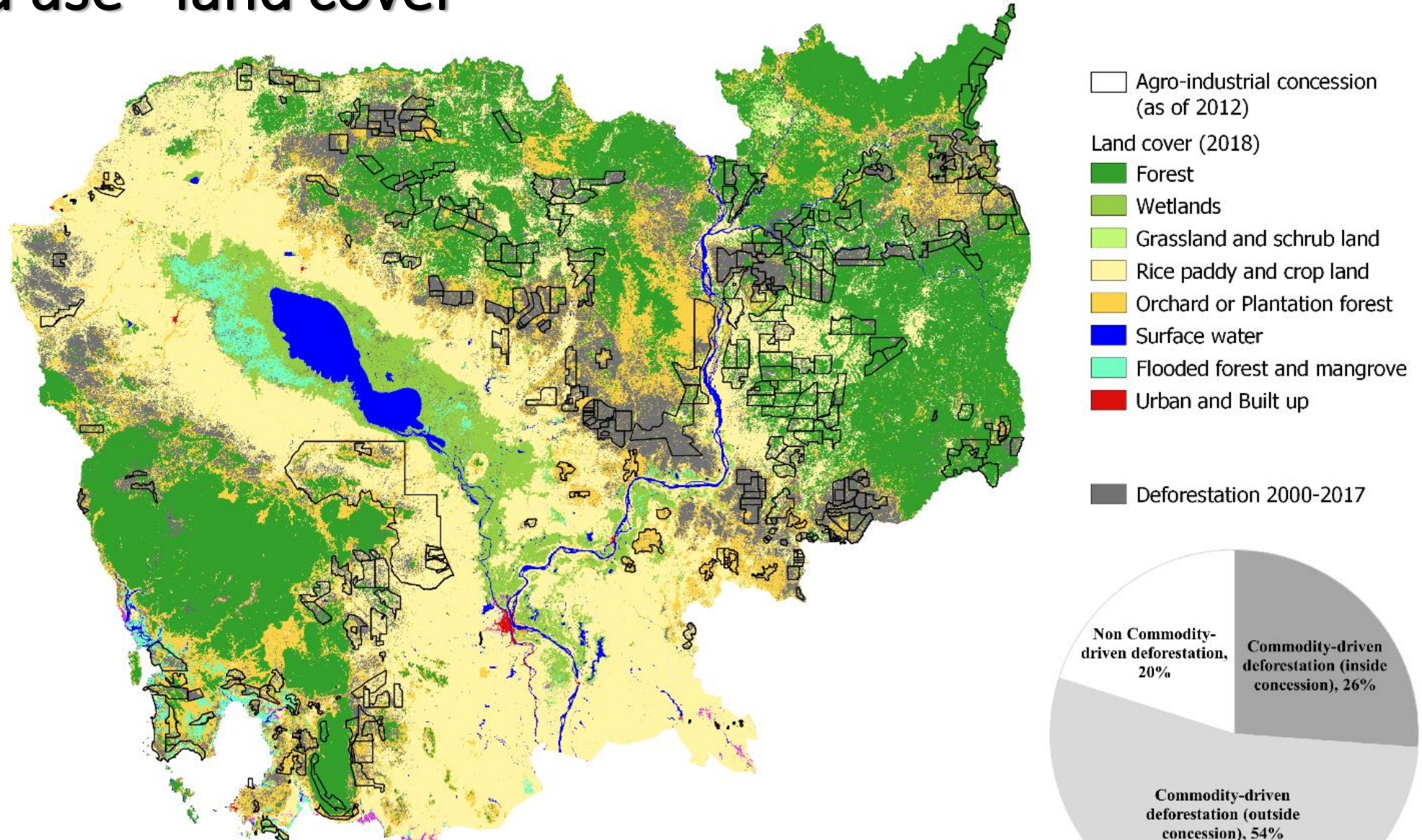


**Total deforestation 2001-2019 =
6,691,886 ha (26% 2000 FC)**



Sources: Hayward and Diepart et al., 2021

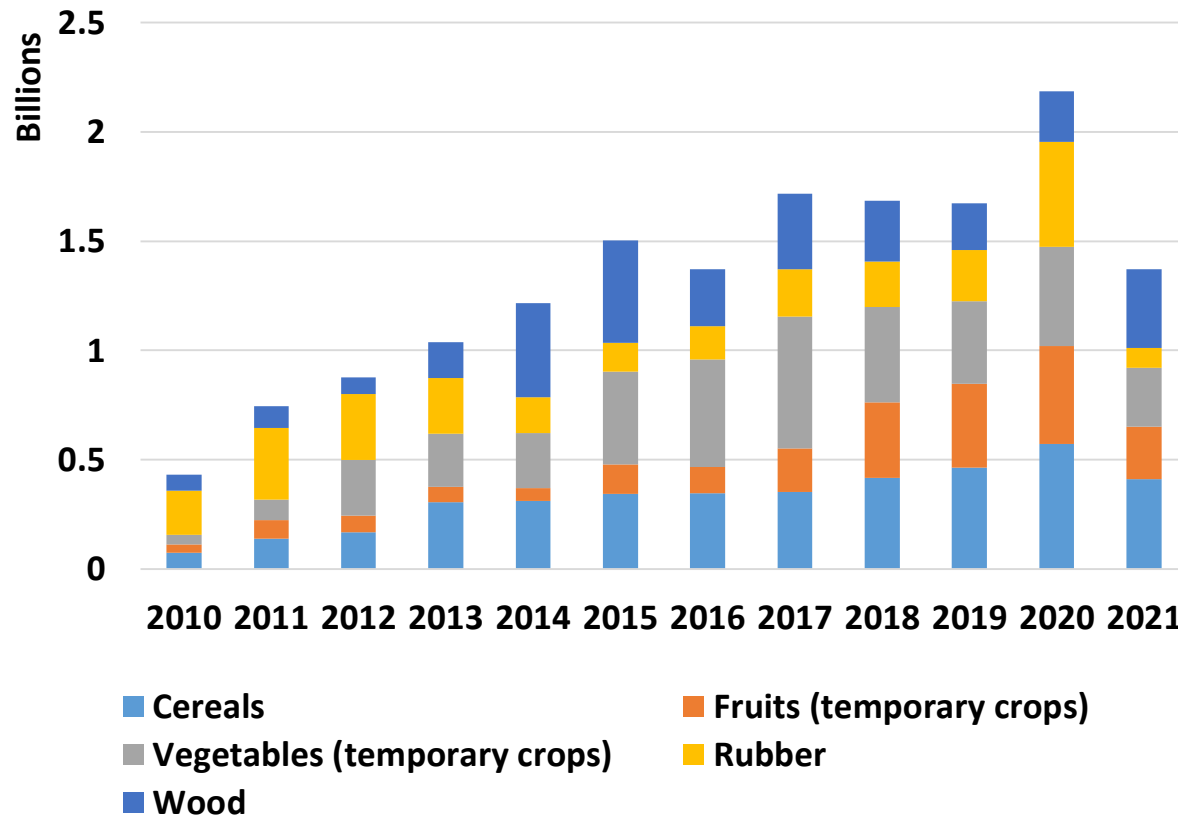
Land use - land cover



Sources: Ehrensperger et al. (forthcoming)

Markets and investments

Value of land commodities exported



Sources: Un ComTrade

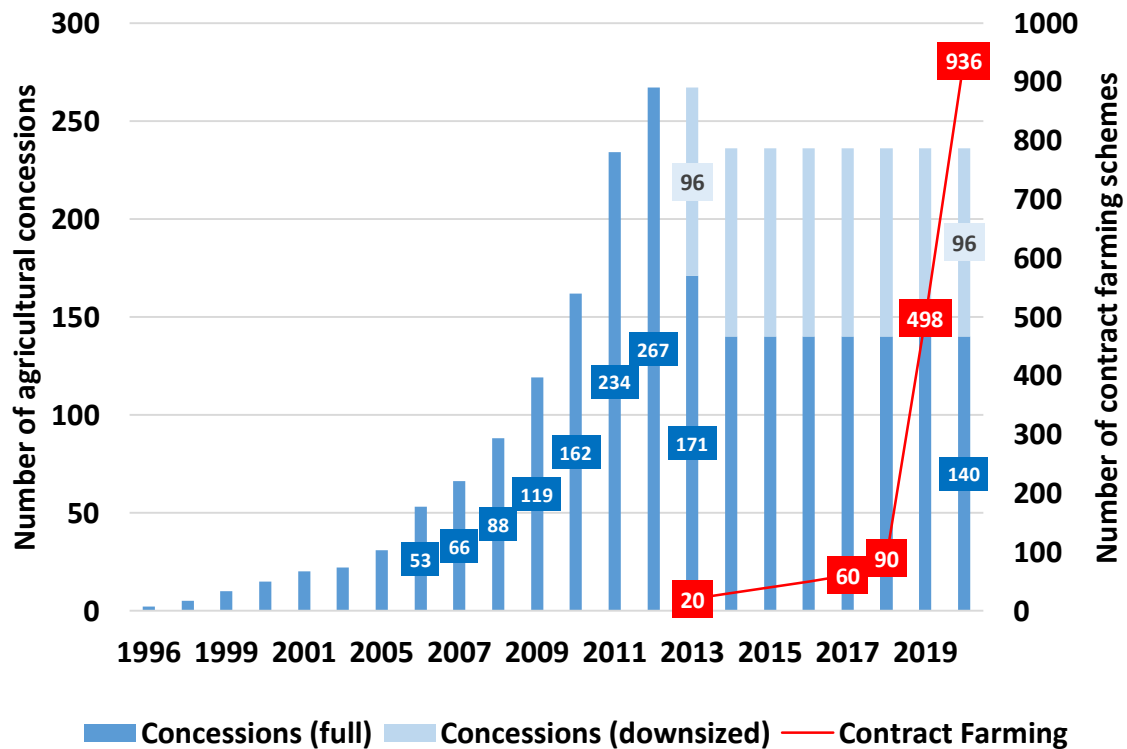
Indebtedness

- Average microloan debt per borrower: 4280 USD (2022)
- Annual income per capita: 1319 USD (2020)

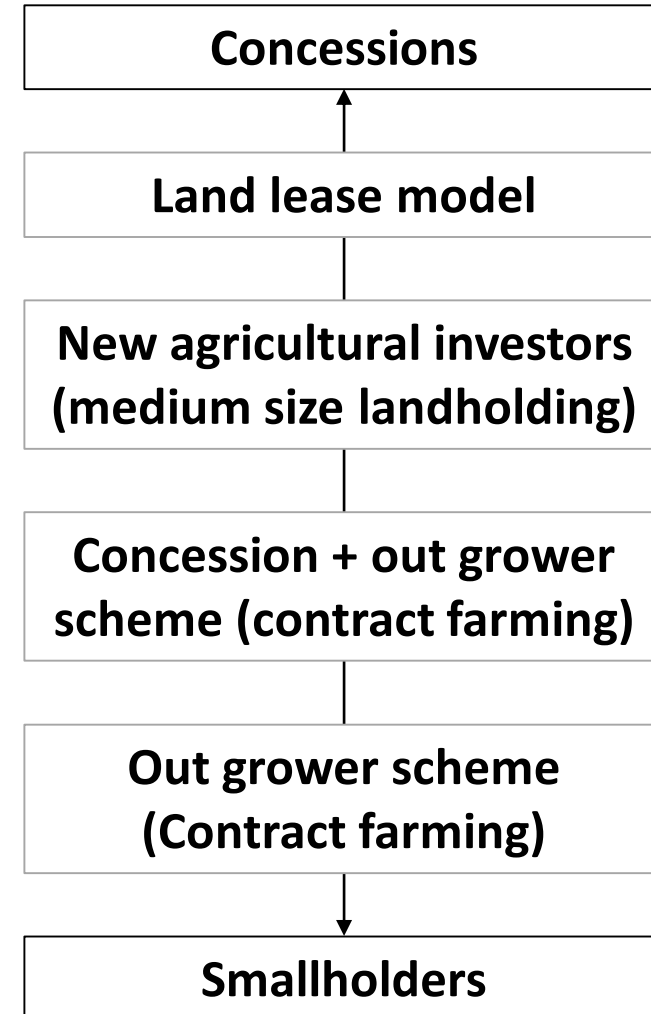
Sources: World Bank

Markets and investments

Changing agricultural investment landscape

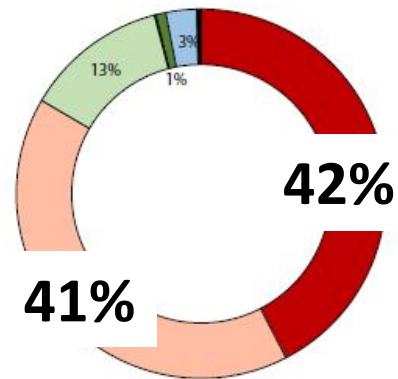
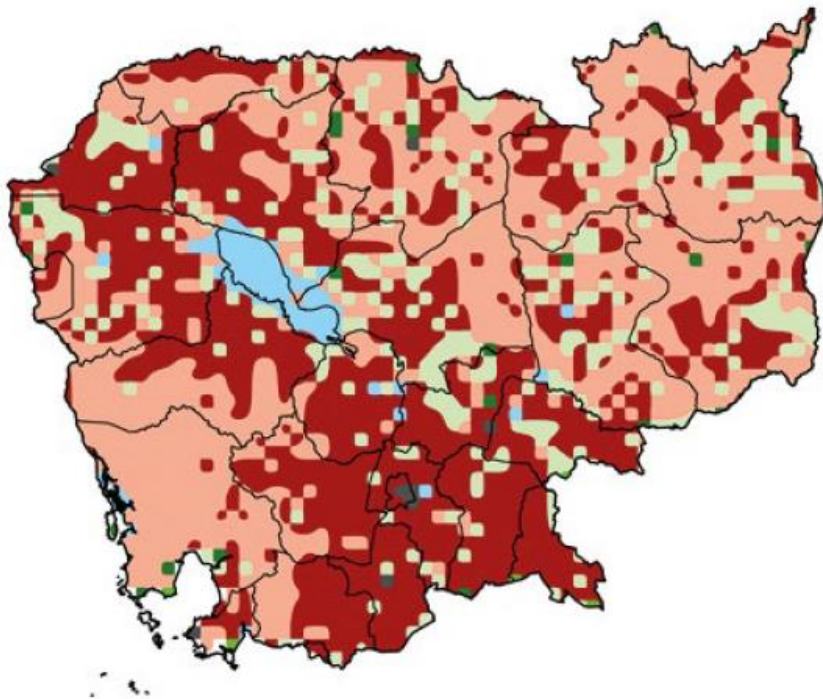


Diepart et al. 2022

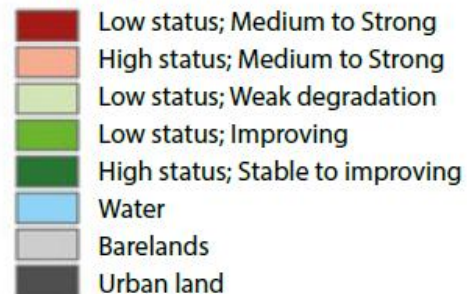


Externalities

Biophysical ecosystem services (biomass, soil and biodiversity)

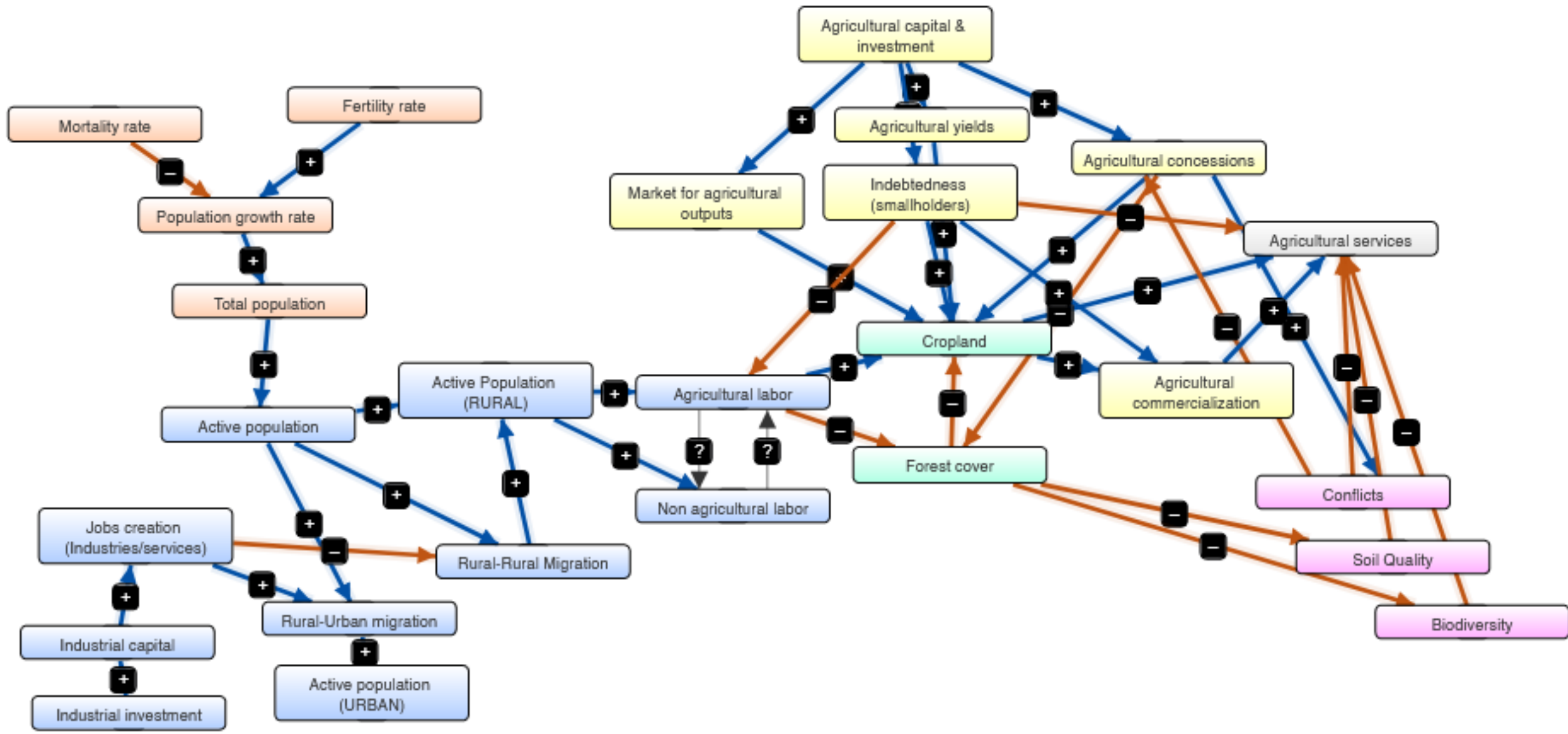


Land Degradation



Sources: Global Land Degradation Information System, 2017

- Soil erosion: cases study in Steung Sangkae watershed - loss between 3.1 and 7.6 t/ha/y during the 2002-2015 period (Nut et al., 2021).
- Increase frequency and severity of droughts and floods
- Over-indebtedness and distress land sale
- Loss of soil carbon
- Conflicts (overlapping land claims)



The role of agroecology

- Regeneration of degraded ecosystems
- Create jobs through labor intensification
- Limit reliance on micro-credit and ease debt management
- More autonomy for smallholder farmers
- New alliances between producers and consumers

Pessimism of the Intellect, Optimism of the Will (Gramsci, 1930)